

2024 Multi-Site Bedding Plant Trial

Research Bulletin 1256 • June 2025



MISSISSIPPI STATE UNIVERSITY™
MS AGRICULTURAL AND
FORESTRY EXPERIMENT STATION

NOTE TO USER

This Mississippi Agricultural and Forestry Experiment Station Bulletin is a summary of research. It is intended for colleagues, cooperators, and sponsors. The interpretation of data presented in this report may change after additional experimentation. Information included is not to be construed as a recommendation for use or as an endorsement of a specific product by Mississippi State University or the Mississippi Agricultural and Forestry Experiment Station.

This report contains data generated as part of the Mississippi Agricultural and Forestry Experiment Station research program. Trade names of commercial products used in this report are included only for clarity and understanding.

2024 Multi-Site Bedding Plant Trial

DR. SHAUN BRODERICK

Associate Extension/Research Professor
Department of Plant and Soil Sciences
MAFES Truck Crops Branch
Central Mississippi Research
and Extension Center
Mississippi State University

DR. PATRICIA KNIGHT

Research Professor, Director of Coastal
Horticulture Research
Department of Plant and Soil Sciences
MAFES South Mississippi Branch
Coastal Research and Extension Center
Mississippi State University

SCOTT LANGLOIS

Senior Research Associate
MAFES South Mississippi Branch
Coastal Research and Extension Center
Mississippi State University

ERIKA SWEETEN

Research Associate I
MAFES Truck Crops Branch
Central Mississippi Research
and Extension Center
Mississippi State University

DR. JEFFREY WILSON

Assistant Professor
Department of Plant and Soil Sciences
North Mississippi Research
and Extension Center
Mississippi State University

SUSAN WORTHEY

Research Associate III
MAFES Northeast Mississippi Branch
North Mississippi Research
and Extension Center
Mississippi State University

This document was approved for publication as Bulletin 1256 of the Mississippi Agricultural and Forestry Experiment Station. It was published by Agricultural and Natural Resources Marketing.

Copyright 2025 by Mississippi State University. All rights reserved. This publication may be copied and distributed without alteration for nonprofit educational purposes, provided that credit is given to the Mississippi Agricultural and Forestry Experiment Station.

2024 Multi-Site Bedding Plant Trial

ABSTRACT

Ornamental plant trials were conducted at the Mississippi Agricultural and Forestry Experiment Station (MAFES) Truck Crops Branch (TCES), MAFES North Mississippi Branch (NMREC), and the MAFES South Mississippi Branch (SMES) to evaluate 48 cultivar entries in the spring and summer of 2024. It comprised a mixture of annuals, perennials, and shade and sun entries. Three cultivars of *Coleus* were trialed in both sun and shade.

Each entry was evaluated for its flower coverage, leaf health, and landscape impact and was assigned a rating of 1 to 5, with 5 being the highest score. Forty entries (71.9%) received a 3.5 or higher average rating and performed well throughout the trial period, and 20 entries (35.9%) received a score of at least 4.0. None of the entries earned a 5.0 rating. While summer temperatures were warm during the season, no extreme weather events occurred during the trial.

INTRODUCTION

Plant breeding companies and horticultural suppliers release new plant material each year. These releases have the potential to outcompete and replace current cultivars and varieties on the market today or expand their offerings to producers and consumers. These plants may offer new characteristics, such as improved disease resistance, increased flowering, or novel attributes, such as an altered plant architecture or flower shape.

While companies may market plants as having improved performance, this may only be true for some plants in the southeastern U.S. region. Environmental factors highly influence plant performance. Regional

trials provide useful information to commercial producers and plant breeders to aid plant selection of annuals and perennials. Trials also help introduce new plant materials to consumers by providing examples of their performance in a local landscape.

Additionally, these trials serve as a resource for horticultural professionals, educators, and home gardeners in Mississippi and surrounding areas in the southeastern U.S. This ornamental trial evaluates the performance of various bedding and garden plants in central, north and south Mississippi to create recommendations for the top-performing plants for these regions.

MATERIALS & METHODS

An ornamental plant trial of 48 cultivars was conducted at three locations in Mississippi: the MAFES Truck Crops Branch in Crystal Springs (USDA Zone 8b), the MAFES North Mississippi Branch in Verona (Zone 8a), and the MAFES South Mississippi Branch in Poplarville (Zone 9a). All entries were supplied by Proven Winners as liners in April (week 11). Each liner was transplanted into 10-cm containers with soilless media (Pro-Mix BX; Premier Tech, Ltd.) and grown for two weeks before transplant in the greenhouse. Fertilizer protocols during production were based on recommended grower guidelines.

The trial entries were planted in 20-cm tall, raised boxes containing native soil. Irrigation was supplied through drip tape as needed. No herbicides were applied; weeds were pulled manually. Pesticides were used sparingly as needed, such as for fire-ant control. Except for the three *Coleus* shade entries that were

trialed only at the NMREC and TCES, all entries were trialed across all three locations.

Semimonthly ratings were based on a 1 to 5 scale, with 5 representing the best rating (beginning and ending dates). Criteria for the ratings included flower coverage, leaf health, and landscape impact. Ratings correlated with percentages. For example, a flower coverage rating 5 indicates that at least 90% of the plant's terminal buds were in flower. A leaf health rating of 5 would indicate that at least 90% of the foliage is free of disease symptoms. Landscape ratings are assigned based on how much an entry stands out in a landscape. Ratings were based on trial criteria per cultivar wand, not comparisons between cultivars (Table 1). Photos were taken at the time of ratings at the TCES location. Local weather data were collected during the trial (Figure 1).

Table 1. Trial evaluation rating scale	
Score	Description
5	Excellent - 90%+
4	Good - 75%+
3	Fair - 50%+
2	Poor - 25%+
1	Unacceptable - <25%

MATERIALS & METHODS

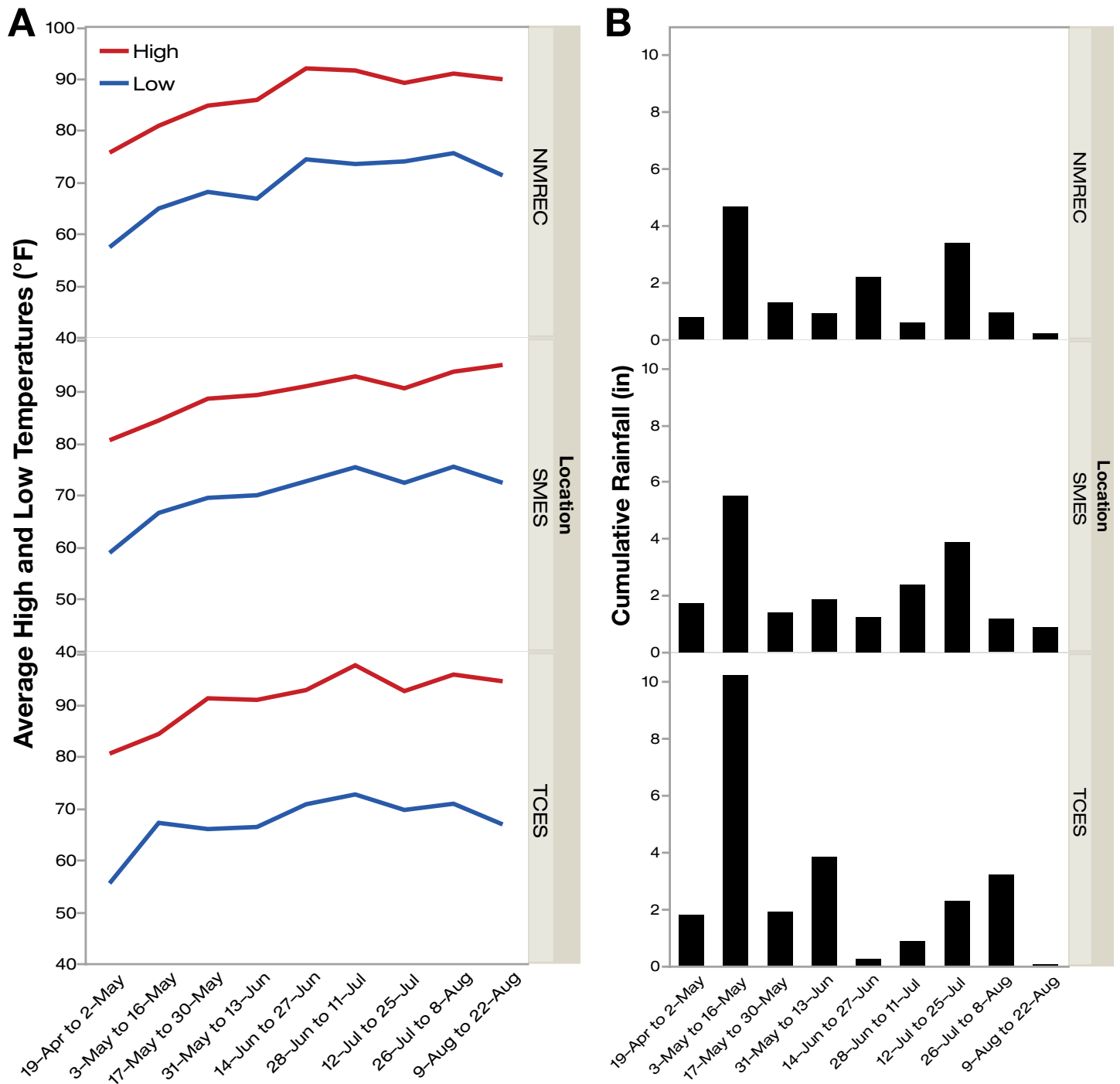


Figure 1. Local weather at trial sites during the trial: (A) average semiweekly highs (red) and lows (blue) and (B) semiweekly cumulative rainfall.

RESULTS AND DISCUSSION

This season's weather was typical for most years, with moderate rainfall in the spring and more sporadic but heavy rain in the summer. Summer high temperatures were particularly warm in July (Figure 1). Most entries performed well in their overall score across all trial sites (Table 2). Across all trial sites, 40 entries (71.9%) received a 3.5 or higher rating and performed well throughout the trial period, and of those, 20 entries (35.9%) received a score of at least 4.0. The top 10 highest-performing entries across all locations received an overall score of no less than 4.1.

Coleus Colorblaze® Mini Me™ Watermelon was the only cultivar that was found to be in the top 10 entries across all three locations (Tables 3-5). *Helianthus* Suncredible® Yellow and *Scaevola* Whirlwind White were among the top 10 highest performers at NMREC and TCES (Tables 3 and 4). *Heliotropium* Augusta® Lavender, *Portulaca* Mojave® Yellow, and *Cuphea* Vermillionaire® were among the top 10 performing entries at SMES and TCES (Tables 4 and 5). *Portulaca* Mojave® Fuchsia was a top 10 performer at the NMREC and SMES (Tables 3 and 5).

Table 2. Average criteria scoring for all 2024 trial entries

Cultivars	Type	Leaf Health	Flower	Landscape Impact	Average
<i>Angelonia</i> Angelface® Blue	Sun Annual	4.6	3.0	3.5	3.8
<i>Angelonia</i> Angelface® Perfectly Pink	Sun Annual	4.5	3.4	3.6	3.9
<i>Angelonia</i> Angelface® Wedgwood Blue	Sun Annual	4.6	2.6	3.3	3.7
<i>Angelonia</i> Angelface® Wedgwood Pink	Sun Annual	4.5	3.0	3.5	3.9
<i>Angelonia</i> Angelface® White Improved	Sun Annual	4.6	3.1	3.6	4.0
<i>Begonia</i> Space Age™ Black Hole™	Shade Annual	3.7	1.3	3.3	3.4
<i>Begonia</i> Space Age™ Europa™	Shade Annual	3.6	0.3	3.1	3.2
<i>Begonia</i> Space Age™ Triton™	Shade Annual	3.8	1.7	3.4	3.5
<i>Coleus</i> Colorblaze® Lime Time	Sun Annual	4.5	3.5	4.4	4.3
<i>Coleus</i> Colorblaze® Lime Time	Shade Annual	4.7	2.9	4.6	4.5
<i>Coleus</i> Colorblaze® Mini Me™ Chartreuse	Sun Annual	4.2	4.1	4.1	4.3
<i>Coleus</i> Colorblaze® Mini Me™ Chartreuse	Shade Annual	4.8	3.2	4.6	4.5
<i>Coleus</i> Colorblaze® Mini Me™ Watermelon	Sun Annual	4.8	4.0	4.4	4.6
<i>Coleus</i> Colorblaze® Mini Me™ Watermelon	Shade Annual	4.7	2.4	4.4	4.4
<i>Cuphea</i> Totally Tempted™ Frosted Violets	Sun Annual	3.5	3.5	3.4	3.4
<i>Cuphea</i> Totally Tempted™ Watermelon Wine™	Sun Annual	4.1	4.3	4.1	4.2
<i>Cuphea</i> Vermillionaire®	Sun Perennial Y1	4.6	4.1	4.2	4.3
<i>Dahlia</i> Virtuoso™ Classy Carmine™	Sun Annual	3.6	2.9	3.1	3.2
<i>Dahlia</i> Virtuoso™ Dayglo Yellow™	Sun Annual	3.4	2.4	2.7	2.8
<i>Dahlia</i> Virtuoso™ Merry Magenta™	Sun Annual	3.6	2.9	3.1	3.2
<i>Dahlia</i> Virtuoso™ Pinkerific™	Sun Annual	3.6	2.9	3.2	3.3
<i>Dahlia</i> Virtuoso™ Vibrant Violet™	Sun Annual	4.1	3.2	3.5	3.6
<i>Helianthus</i> Suncredible® Saturn	Sun Annual	4.1	3.9	4.0	4.0

RESULTS AND DISCUSSION

Table 2. Average criteria scoring for all 2024 trial entries

Cultivars	Type	Leaf Health	Flower	Landscape Impact	Average
<i>Helianthus</i> Suncredible® Yellow	Sun Annual	4.4	4.3	4.2	4.3
<i>Heliotropium</i> Aromagica™ Purple	Sun Annual	4.4	3.9	4.0	4.1
<i>Heliotropium</i> Augusta® Lavender	Sun Annual	4.3	4.3	4.2	4.3
<i>Impatiens</i> Rockapulco® Appleblossom Improved	Shade Annual	4.2	3.6	3.7	3.8
<i>Impatiens</i> Rockapulco® Red Improved	Shade Annual	4.1	3.7	3.8	3.9
<i>Impatiens</i> Rockapulco® Rose Improved	Shade Annual	4.1	3.5	3.6	3.7
<i>Nemesia</i> Bluebird Improved	Sun Annual	3.4	3.2	2.9	3.1
<i>Petunia</i> Supertunia Mini Vista® Plum Veined	Sun Annual	3.7	3.7	3.6	3.6
<i>Petunia</i> Supertunia Mini Vista® Yellow	Sun Annual	3.6	3.7	3.6	3.6
<i>Petunia</i> Supertunia Tiara™ Blue	Sun Annual	3.7	3.7	3.6	3.7
<i>Petunia</i> Supertunia Tiara™ Pink	Sun Annual	3.7	3.5	3.5	3.5
<i>Petunia</i> Supertunia Vista® Bubblegum	Sun Annual	4.1	4.0	4.0	4.0
<i>Petunia</i> Supertunia® Bermuda Beach Improved	Sun Annual	3.3	3.1	3.1	3.2
<i>Portulaca</i> Mojave® Fuchsia Improved	Sun Annual	4.3	4.1	4.1	4.2
<i>Portulaca</i> Mojave® Mango	Sun Annual	4.1	3.5	3.5	3.7
<i>Portulaca</i> Mojave® Pink	Sun Annual	4.2	3.4	3.7	3.8
<i>Portulaca</i> Mojave® Red	Sun Annual	3.8	3.2	3.2	3.4
<i>Portulaca</i> Mojave® Tangerine Improved	Sun Annual	3.9	3.4	3.5	3.6
<i>Portulaca</i> Mojave® Yellow	Sun Annual	4.5	4.1	4.2	4.3
<i>Salvia</i> Unplugged® Red	Sun Perennial Y1	3.7	3.6	3.5	3.6
<i>Salvia</i> Unplugged® So Blue™	Sun Perennial Y1	3.9	4.3	3.7	3.9
<i>Salvia</i> Unplugged® White	Sun Perennial Y1	3.8	3.7	3.6	3.7
<i>Scaevola</i> Stardiva™ Blue	Sun Annual	3.9	4.1	3.9	4.0
<i>Scaevola</i> Stardiva™ Pink	Sun Annual	3.4	3.6	3.2	3.4
<i>Scaevola</i> Stardiva™ White	Sun Annual	3.8	3.9	3.8	3.8
<i>Scaevola</i> Whirlwind® Blue	Sun Annual	4.2	4.1	4.1	4.1
<i>Scaevola</i> Whirlwind® Pink	Sun Annual	4.1	4.0	4.1	4.1
<i>Scaevola</i> Whirlwind® White	Sun Annual	4.3	4.1	4.0	4.1

RESULTS AND DISCUSSION

Table 3. Top 10 trial entries at the MAFES Northeast Mississippi Branch

Cultivar	Overall Mean Score
1. <i>Petunia</i> Supertunia Mini Vista® Plum Veined	4.63
2. <i>Helianthus</i> Suncredible® Yellow	4.59
3. <i>Scaevola</i> Whirlwind® White	4.53
4. <i>Petunia</i> Supertunia® Bermuda Beach Improved	4.34
5. <i>Coleus</i> Colorblaze® Mini Me™ Watermelon	4.33
6. <i>Petunia</i> Supertunia Vista® Bubblegum	4.32
7. <i>Helianthus</i> Suncredible® Saturn	4.30
8. <i>Portulaca</i> Mojave® Fuchsia Improved	4.28
9. <i>Portulaca</i> Mojave® Red	4.26
10. <i>Petunia</i> Supertunia Mini Vista® Yellow	4.23

Table 4. Top 10 trial entries at the MAFES South Mississippi Branch

Cultivar	Overall Mean Score
1. <i>Coleus</i> Colorblaze® Mini Me™ Watermelon	4.78
2. <i>Salvia</i> Unplugged® So Blue™	4.54
3. <i>Cuphea</i> Vermillionaire®	4.36
4. <i>Portulaca</i> Mojave® Fuchsia Improved	4.34
5. <i>Cuphea</i> Totally Tempted™ Watermelon Wine™	4.26
6. <i>Portulaca</i> Mojave® Yellow	4.26
7. <i>Angelonia</i> Angelface® Perfectly Pink	4.21
8. <i>Angelonia</i> Angelface® White Improved	4.14
9. <i>Begonia</i> Space Age™ Triton™	4.12
10. <i>Heliotropium</i> Augusta® Lavender	4.12

RESULTS AND DISCUSSION

Table 5. Top 10 trial entries at the MAFES Trucks Crops Branch

Cultivar	Overall Mean Score
1. <i>Coleus</i> Colorblaze® Mini Me™ Chartreuse	4.83
2. <i>Helianthus</i> Suncredible® Yellow	4.81
3. <i>Coleus</i> Colorblaze® Lime Time	4.70
4. <i>Coleus</i> Colorblaze® Mini Me™ Watermelon	4.61
5. <i>Scaevola</i> Whirlwind® Blue	4.59
6. <i>Heliotropium</i> Augusta® Lavender	4.58
7. <i>Salvia</i> Unplugged® White	4.51
8. <i>Scaevola</i> Whirlwind® White	4.49
9. <i>Cuphea</i> Vermillionaire®	4.47
10. <i>Portulaca</i> Mojave® Yellow	4.39

RESULTS AND DISCUSSION

Sun Annuals

Of the 38 sun annual entries across all three locations, 12 received an average overall score of at least 4.0 across all locations, and 33 received an overall score above 3.0. The top performing annual was *Coleus Colorblaze*® Mini Me™ Watermelon, with an overall rating of 4.6. This *Coleus* was not only the top-performing annual but also the top-performing cultivar across the entire trial. *Coleus Colorblaze*® Lime Time and *Helianthus Suncredible*® Yellow also performed well (overall score of 4.3). *Portulaca Mojave*® Yellow and *Heliotropium Augusta*® Lavender also received overall scores of 4.3 (Figure 2).



Figure 2A



Figure 2B



Figure 2C



Figure 2D



Figure 2E

Figure 2. Top performing in-ground annuals. (A) *Coleus Colorblaze*® Mini Me™ Watermelon, photo taken 07/26/2024, overall score 4.6; (B) *Coleus Colorblaze*® Lime Time, 07/26/2024, 4.3; (C) *Helianthus Suncredible*® Yellow, 06/28/2024, 4.3; (D), *Portulaca Mojave*® Yellow 05/31/2024, 4.3; (E) *Heliotropium Augusta*® Lavender 06/02/2023, 4.1.

RESULTS AND DISCUSSION

The top performing annuals grown for color (flowering) were *Cuphea* Totally Tempted™ Watermelon Wine™, *Helianthus* Suncredible® Yellow, *Heliotropium* Augusta® Lavender, and *Salvia* Unplugged® So Blue™, receiving an overall score of 4.3 in flowering. *Portulaca* Mojave® Fuchsia Improved received a flower score of 4.1, close behind the top performers (Figure 3).



Figure 3A



Figure 3B



Figure 3C

Figure 3. Top performing flowering annuals (A) *Cuphea* Totally Tempted™ Watermelon Wine™, photo taken 06/17/2024, overall flowering score 4.3; (B) *Salvia* Unplugged® So Blue™, 05/31/2024, 4.3; (C) *Portulaca* Mojave® Fuchsia Improved, 06/17/2024, 4.2.

RESULTS AND DISCUSSION

Shade Annuals

The top-performing shade annuals were *Coleus* Colorblaze® Mini Me™ Chartreuse and *Coleus* Colorblaze® Mini Me™ Lime Time, with an overall rating of 4.5. The next top-performing plant was *Coleus* Colorblaze® Mini Me™ Watermelon, with an overall rating of 4.4. The *Coleus* varieties performed exceptionally well across the trial. *Impatiens* Rockapulco® Red Improved also performed well, receiving an overall score of 3.9 (Figure 4).



Figure 4A



Figure 4B

Figure 4. Top performing shade annuals (A) *Coleus* Colorblaze® Mini Me™ Chartreuse, Photo taken 05/31/2024, Overall score 4.5; (B) *Impatiens* Rockapulco® Red Improved, 05/31/2024, 3.9.

RESULTS AND DISCUSSION

Perennials

Four year-one sun perennials were grown with an average overall rating of 3.9, and only one received an overall score of 4.0 or higher. *Cuphea* Vermillionaire® received an overall score of 4.3 and bloomed throughout the trial. *Salvia* Unplugged® So Blue™ performed second best of the year-one perennials, scoring 3.9. This variety was also one of the top-performing in flower production, with a score of 4.3 (Figure 5). It is important to note that multi-year trials are necessary to measure overwintering success and longevity in the landscape.



Figure 5A



Figure 5B

Figure 5. Top-performing sun perennials. (A) *Cuphea* Vermillionaire®, the photo was taken 06/28/2024, 4.3; (B) *Salvia* Unplugged® So Blue™, 05/31/2024, 4.3.

Early vs. Late Season Entry Performance

Not all plants perform well throughout the season, but that does not mean they do not deserve a place in the landscape. During design planning, it is often necessary to tailor plantings to spring and summer to optimize the landscape appearance throughout the seasons. *Petunia* Supertunia Mini Vista® Plum Veined, *Petunia* Supertunia Mini Vista® Yellow, and *Petunia* Supertunia® Bermuda Beach Improved all had higher overall scores early in the trial but experienced a sharp decline in performance, especially in flowering, during the summer months. These varieties would be best suited for a spring landscape where their specific colors are needed. In contrast, *Petunia* Supertunia Vista® Bubblegum had a minor reduction of 0.43 in its overall score. It may be best suited in landscapes that need to be left installed later into the summer. All Dahlia entries experienced a decline as the season progressed, with *Dahlia* Virtuoso™ Vibrant Violet™ and Virtuoso™ Pinkerific™ having the lowest decline in their performance. The Dahlias performed much better than they have performed in previous years. This may be due to climate differences, genetic differences, or a combination of these factors.

The improvement in trial entry performance as the season progressed into the summer was not as great as the decline of entries that preferred cooler spring weather. *Coleus* Colorblaze® Mini Me™ Watermelon had the largest improvement, 0.74, in its overall score. This gain resulted most from increased landscape impact as the plant grew larger. *Cuphea* Vermillionaire® also experienced an increase of 0.58, mostly from an increase in flowering and, to a lesser extent, its landscape impact.

RESULTS AND DISCUSSION

Table 5. Early (May-Jun) to late (Jul-Aug) season shifts in cultivar performance in leaf health, flowering, landscape impact, and overall scores. (Pink/red shades indicate varying scales of better spring scores, and blue shades indicate varying scales of better summer scores).

Cultivar	Leaf Health			Flowering			Landscape Impact			Overall				Rank
	Early	Late	Δ(L-E)	Early	Late	Δ(L-E)	Early	Late	Δ(L-E)	Early	Late	Δ(L-E)	Full Season	
<i>Coleus</i> Colorblaze® Mini Me™ Watermelon	4.57	5.00	0.43	N/A	N/A	N/A	3.97	5.00	1.03	4.25	4.98	0.74	4.57	1
<i>Coleus</i> Colorblaze® Lime Time	4.57	4.33	-0.24	N/A	N/A	N/A	4.47	4.33	-0.14	4.49	4.13	-0.35	4.33	2
<i>Helianthus</i> Suncredible® Yellow	4.67	4.17	-0.50	4.43	4.17	-0.26	4.37	4.17	-0.20	4.49	4.13	-0.36	4.33	3
<i>Coleus</i> Colorblaze® Mini Me™ Chartreuse	4.17	4.25	0.08	N/A	N/A	N/A	4.07	4.25	0.18	4.17	4.50	0.33	4.32	4
<i>Cuphea</i> Vermillionaire®	4.53	4.63	0.10	3.73	4.63	0.90	3.83	4.63	0.80	4.03	4.62	0.58	4.29	5
<i>Portulaca</i> Mojave® Yellow	4.60	4.29	-0.31	4.03	4.25	0.22	4.03	4.29	0.26	4.22	4.36	0.14	4.28	6
<i>Heliotropium</i> Augusta® Lavender	4.53	4.08	-0.45	4.17	4.46	0.29	4.03	4.08	0.05	4.24	4.28	0.04	4.26	7
<i>Portulaca</i> Mojave® Fuchsia Improved	4.70	3.73	-0.97	3.97	4.38	0.41	4.13	3.73	-0.40	4.27	4.05	-0.22	4.17	8
<i>Cuphea</i> Totally Tempted™ Watermelon Wine™	4.43	3.58	-0.85	4.63	3.92	-0.71	4.40	3.58	-0.82	4.49	3.73	-0.76	4.16	9
<i>Scaevola</i> Stardiva™ White	4.33	4.17	-0.16	4.07	4.13	0.06	4.03	4.17	0.14	4.13	4.11	-0.03	4.12	10
<i>Scaevola</i> Stardiva™ Blue	4.13	4.25	0.12	3.73	4.54	0.81	3.80	4.25	0.45	3.89	4.40	0.51	4.12	11
<i>Heliotropium</i> Aromagica™ Purple	4.53	4.29	-0.24	4.17	3.67	-0.50	4.13	4.29	0.16	4.27	3.88	-0.40	4.10	12
<i>Scaevola</i> Whirlwind® Pink	4.17	4.00	-0.17	3.83	4.21	0.38	3.93	4.00	0.07	3.98	4.16	0.18	4.06	13
<i>Petunia</i> Supertunia Vista® Bubblegum	4.57	3.58	-0.99	4.07	3.96	-0.11	4.07	3.58	-0.49	4.23	3.80	-0.43	4.04	14
<i>Helianthus</i> Suncredible® Saturn	4.53	3.46	-1.07	4.13	3.67	-0.46	4.23	3.46	-0.77	4.31	3.58	-0.72	3.99	15
<i>Angelonia</i> Angelface® White Improved	4.43	4.88	0.45	3.03	3.24	0.21	3.30	4.88	1.58	3.73	4.23	0.50	3.98	16
<i>Scaevola</i> Stardiva™ Blue	4.30	3.38	-0.92	4.23	4.00	-0.23	4.27	3.38	-0.89	4.26	3.63	-0.63	3.98	17
<i>Angelonia</i> Angelface® Perfectly Pink	4.47	4.58	0.11	3.30	3.26	-0.04	3.43	4.58	1.15	3.80	4.10	0.30	3.93	18
<i>Impatiens</i> Rockapulco® Red Improved (shade)	4.30	3.92	-0.38	3.92	3.46	-0.46	3.90	3.92	0.02	4.03	3.65	-0.38	3.86	19
<i>Angelonia</i> Angelface® Wedgewood Pink	4.50	4.50	0.00	2.98	2.96	-0.02	3.40	4.50	1.10	3.82	3.89	0.07	3.86	20
<i>Salvia</i> Unplugged® So Blue™	4.03	3.73	-0.30	4.30	3.71	-0.59	3.90	3.73	-0.17	4.03	3.63	-0.40	3.86	21
<i>Scaevola</i> Stardiva™ White	4.00	3.54	-0.46	3.97	3.92	-0.05	3.90	3.54	-0.36	3.95	3.71	-0.25	3.84	22
<i>Impatiens</i> Rockapulco® Appleblossom Improved (shade)	4.43	3.92	-0.51	3.83	3.38	-0.45	3.73	3.92	0.19	3.97	3.63	-0.34	3.82	23
<i>Portulaca</i> Mojave® Pink	4.43	3.92	-0.51	3.30	3.58	0.28	3.63	3.92	0.29	3.79	3.75	-0.04	3.77	24
<i>Angelonia</i> Angelface® Blue	4.53	4.58	0.05	2.94	3.08	0.14	3.40	4.58	1.18	3.67	3.90	0.23	3.77	25
<i>Portulaca</i> Mojave® Mango	4.37	3.77	-0.60	3.33	3.79	0.46	3.50	3.77	0.27	3.74	3.68	-0.06	3.71	26

RESULTS AND DISCUSSION

Table 5. Early (May-Jun) to late (Jul-Aug) season shifts in cultivar performance in leaf health, flowering, landscape impact, and overall scores. (Pink/red shades indicate varying scales of better spring scores, and blue shades indicate varying scales of better summer scores). (continued)

Cultivar	Leaf Health			Flowering			Landscape Impact			Overall				Rank
	Early	Late	Δ(L-E)	Early	Late	Δ(L-E)	Early	Late	Δ(L-E)	Early	Late	Δ(L-E)	Full Season	
<i>Impatiens</i> Rockapulco® Rose Improved (shade)	4.40	3.67	-0.73	3.52	3.38	-0.14	3.67	3.67	0.00	3.85	3.53	-0.33	3.71	27
<i>Petunia</i> Supertunia Tiara™ Blue	4.37	2.88	-1.49	4.27	3.00	-1.27	4.20	2.88	-1.32	4.28	2.95	-1.33	3.69	28
<i>Salvia</i> Unplugged® White	3.80	3.88	0.08	3.53	3.75	0.22	3.63	3.88	0.25	3.65	3.73	0.07	3.69	29
<i>Angelonia</i> Angelface® Wedgewood Blue	4.53	4.63	0.10	2.80	2.28	-0.52	3.17	4.63	1.46	3.72	3.63	-0.08	3.68	30
<i>Petunia</i> Supertunia Mini Vista® Plum Veined	4.65	2.44	-2.21	4.47	2.71	-1.76	4.38	2.44	-1.94	4.49	2.64	-1.85	3.68	31
<i>Portulaca</i> Mojave® Tangerine Improved	4.47	3.29	-1.18	3.67	3.04	-0.63	3.83	3.29	-0.54	4.00	3.18	-0.82	3.64	32
<i>Petunia</i> Supertunia Mini Vista® Yellow	4.43	2.58	-1.85	4.20	3.13	-1.07	4.23	2.58	-1.65	4.29	2.81	-1.48	3.63	33
<i>Dahlia</i> Virtuoso™ Vibrant Violet™	4.40	3.79	-0.61	3.40	2.96	-0.44	3.70	3.79	0.09	3.83	3.35	-0.48	3.62	34
<i>Salvia</i> Unplugged® Red	3.93	3.42	-0.51	4.11	3.08	-1.03	3.70	3.42	-0.28	3.81	3.26	-0.56	3.57	35
<i>Petunia</i> Supertunia Tiara™ Pink	4.43	2.71	-1.72	3.87	3.04	-0.83	3.97	2.71	-1.26	4.09	2.85	-1.24	3.54	36
<i>Begonia</i> Space Age™ Triton™ (shade)	4.43	2.33	-2.10	N/A	N/A	N/A	3.80	2.33	-1.47	4.04	2.29	-1.75	3.50	37
<i>Cuphea</i> Totally Tempted™ Frosted Violets	4.20	2.67	-1.53	4.37	2.42	-1.95	4.17	2.67	-1.50	4.19	2.52	-1.68	3.45	38
<i>Scaevola</i> Stardiva™ Pink	3.80	2.83	-0.97	4.03	3.13	-0.90	3.70	2.83	-0.87	3.85	2.86	-1.00	3.41	39
<i>Portulaca</i> Mojave® Red	4.13	3.33	-0.80	3.47	2.96	-0.51	3.43	3.33	-0.10	3.65	3.05	-0.60	3.39	40
<i>Begonia</i> Space Age™ Black Hole™ (shade)	4.13	3.97	-0.16	N/A	N/A	N/A	3.47	3.97	0.50	3.67	N/A	N/A	3.34	41
<i>Dahlia</i> Virtuoso™ Pinkerific™	4.00	3.21	-0.79	3.00	2.71	-0.29	3.40	3.21	-0.19	3.48	3.00	-0.48	3.27	42
<i>Dahlia</i> Virtuoso™ Classy Carmine™	4.20	2.96	-1.24	3.33	2.53	-0.80	3.63	2.96	-0.67	3.73	2.63	-1.10	3.24	43
<i>Begonia</i> Space Age™ Europa™ (shade)	4.53	2.25	-2.28	N/A	N/A	N/A	3.83	2.25	-1.58	4.01	2.17	-1.84	3.24	44
<i>Petunia</i> Supertunia® Bermuda Beach Improved	4.20	2.13	-2.07	3.93	2.17	-1.76	3.90	2.13	-1.77	4.02	2.18	-1.84	3.20	45
<i>Nemesia</i> Bluebird Improved	4.07	2.48	-1.59	4.13	2.32	-1.81	3.53	2.48	-1.05	3.79	2.35	-1.44	3.15	46
<i>Dahlia</i> Virtuoso™ Merry Magenta™	4.03	2.75	-1.28	3.17	2.29	-0.88	3.37	2.75	-0.62	3.51	2.60	-0.91	3.10	47
<i>Dahlia</i> Virtuoso™ Dayglo Yellow™	4.03	2.58	-1.45	2.83	1.71	-1.12	3.17	2.58	-0.59	3.37	2.13	-1.23	2.82	48

CONCLUSION

The trialing period during the 2024 season experienced typical weather patterns for the state. All but one entry received an average overall score above 3.0 across all trial sites within the state, speaking to the remarkable nature of the ornamental plant improvement and the importance of selection and breeding work. One entry, *Coleus* Colorblaze®

Mini Me™ Watermelon, was the only entry to appear in each location's top 10 best-performing entries lists. Landscapers and homeowners can utilize these data to plan landscapes, and growers and producers can utilize these data to aid their selection process in choosing appropriate plant material for this region.

REFERENCES

CAMERON, R., & HITCHMOUGH, J. 2016. Environmental horticulture: Science and management of green landscapes. Cabi.

HAMRICK D. 2003. Ball Redbook, Crop production, Volume 2. Batavia Ball Publishing

HENTIG, W. 1998. Strategies of evaluation and introduction of "new ornamental plants," 65-80. Acta Horticulturae. International Society for Horticultural Science (ISHS), Leuven, Belgium. <https://doi.org/10.17660/ActaHortic.1998.454.6>.



The mission of the Mississippi Agricultural and Forestry Experiment Station and the College of Agriculture and Life Sciences is to advance agriculture and natural resources through teaching and learning, research and discovery, service and engagement which will enhance economic prosperity and environmental stewardship, to build stronger communities and improve the health and well-being of families, and to serve people of the state, the region and the world.

Scott Willard, Director

mafes.msstate.edu

Mention of a trademark or proprietary product does not constitute a guarantee or warranty of the product by the Mississippi Agricultural and Forestry Experiment Station and does not imply its approval to the exclusion of other products that also may be suitable.

Mississippi State University is an equal opportunity institution. Discrimination is prohibited in university employment, programs or activities based on race, color, ethnicity, sex, pregnancy, religion, national origin, disability, age, sexual orientation, genetic information, status as a U.S. veteran, or any other status to the extent protected by applicable law. Questions about equal opportunity programs or compliance should be directed to the Office of Civil Rights Compliance, 231 Famous Maroon Band Street, P.O. 6044, Mississippi State, MS 39762, (662) 325-5839.