

2024 SPRING-SUMMER ORNAMENTALS TRIAL: TOP PERFORMERS

Bulletin 1254 • June 2025



MISSISSIPPI STATE UNIVERSITY™
MS AGRICULTURAL AND
FORESTRY EXPERIMENT STATION

NOTE TO USER

This Mississippi Agricultural and Forestry Experiment Station Bulletin is a summary of research. It is intended for colleagues, cooperators, and sponsors. The interpretation of data presented in this report may change after additional experimentation. Information included is not to be construed as a recommendation for use or as an endorsement of a specific product by Mississippi State University or the Mississippi Agricultural and Forestry Experiment Station.

This report contains data generated as part of the Mississippi Agricultural and Forestry Experiment Station research program. Trade names of commercial products used in this report are included only for clarity and understanding.

2024 Spring-Summer Ornamentals Trial: Top Performers

SHAUN BRODERICK

Assistant Research and Extension Professor
Department of Plant and Soil Sciences
MAFES Truck Crops Branch
Mississippi State University

ERIKA SWEETEN

Research Associate I
MAFES Truck Crops Branch
Mississippi State University

This document was approved for publication as Bulletin 1254 of the Mississippi Agricultural and Forestry Experiment Station. It was published by Agricultural and Natural Resources Marketing.

Copyright 2025 by Mississippi State University. All rights reserved. This publication may be copied and distributed without alteration for nonprofit educational purposes, provided that credit is given to the Mississippi Agricultural and Forestry Experiment Station.

ABSTRACT

Ornamental trials were conducted at the Mississippi Agricultural and Forestry Experiment Station's Truck Crops Branch in Crystal Springs, MS, evaluating 271 entries in the spring and summer of 2024. It included 112 perennials, 59 containerized plants, 98 annuals, and 2 edible entries. Plants were evaluated for their flower coverage, leaf health, and landscape impact and were assigned a rating of 1 to 5, with 5 being the highest score. Of the entries, 153 (56.4%) received a 3.0 or higher rating and performed well throughout the trial

period, and 93 (34.3%) received a score of at least 4.0. None of the entries performed at a perfect 5.0 rating. In our consumer preference panel, we had 64 participants select their top three favorite plants in the trial—ones they would consider for purchase at the garden center. *Lobelia* Heatopia™ Dark Blue and *Hibiscus* Summerific® 'Valentine's Crush' were tied for first place, *Pennisetum* Jade Princess won second place, and *Hibiscus* Summerific® 'All Eyes On Me' won third place.

INTRODUCTION

Companies release new plant material each year. These releases have the potential to outcompete and replace current cultivars and varieties on the market today or can expand the offerings of companies to producers and consumers. They may offer new characteristics, such as improved disease resistance, increased flowering, or novel attributes, such as an altered plant architecture or flower shape. While companies may market plants as having improved performance, this may not be true for each plant in our region. Environmental factors highly influence plant

performance. Regional trials provide useful information to commercial producers and plant breeders to aid in the plant selection of annuals and perennials. Trials also help introduce new plant materials to consumers by providing examples of their performance in a local landscape. Additionally, these trials serve as a resource for horticultural professionals, educators, and home gardeners in Mississippi and surrounding areas in the southeastern U.S. This ornamental trial evaluates the performance of various bedding and garden plants in central Mississippi.



MATERIALS AND METHODS

The ornamental trial of 230 cultivars was conducted at the Mississippi Agricultural and Forestry Experiment Station's Truck Crops Branch in Crystal Springs, Mississippi (USDA Zone 8b). Forty-one entries were trialed under two conditions (e.g., sun vs. shade; in-ground vs. container). Entries were supplied from Ball FloraPlant, Darwin Perennials, Proven Winners, Selecta One, and Walter's Gardens, as rooted plugs or finished containers. Entries from PanAmerican Seed and Kieft Seed were supplied as seed. Sowing dates were cultivar-specific. Seeds were sown in 72-cell plug trays filled with soilless medium (Pro-Mix BX; Premier Tech, Ltd.). The sowing dates were based on recommended production timelines. Plants requiring longer production were sown in January, while other entries with short production were sown in March. In April, the containerized trial entries were transplanted into 30-cm hanging baskets or 30-cm containers filled with soilless growing medium (Pro-Mix BX; Premier Tech, Ltd.) and grown according to industry recommendations. The annuals and perennials were planted in 20-cm tall, raised boxes containing native soil. Irrigation was supplied through drip tape as needed. No herbicides were applied; weeds were pulled manually. Pesticides were used sparingly on an as-needed basis, such as for fire-ant control.

Semimonthly ratings were based on a 1-5 scale, with 5 representing the best rating. Criteria for the ratings included flower coverage, leaf health, and landscape impact. Ratings correlated with percentages. For example, a flower coverage rating of 5 indicates that at least 90% of the plant's terminal buds were in flower. A leaf health rating of 5 would indicate that at least 90% of the foliage is free of disease symptoms. Ratings were based on trial criteria per cultivar and not comparisons between cultivars (Table 1). Local weather data were collected during the trial (Figure 1).

Consumer preference ratings were based on 64 participants, who were each provided with three utility flags to select plants they would consider purchasing if available. Flags were tallied after the event to identify those with the most votes.

Table 1. Planting trial rating scale	
Score	Description
5	Excellent - 90%+
4	Good - 75%+
3	Fair - 50%+
2	Poor - 25%+
1	Unacceptable - <25%

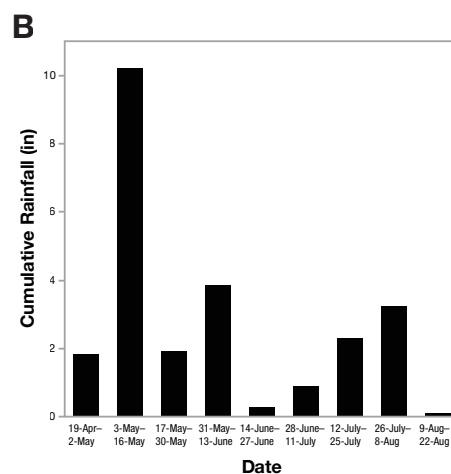
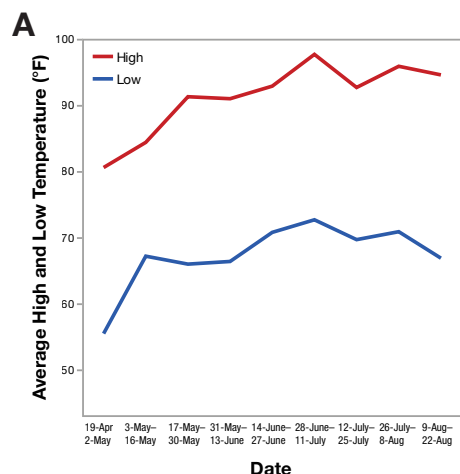


Figure 1. Local weather data during the trial: (A) average semiweekly highs (red) and lows (blue) and (B) semiweekly cumulative rainfall.

RESULTS & DISCUSSION

This season's weather was typical for most years, with moderate rainfall in the spring and more sporadic but heavy rainfall in the summer. Summer high temperatures were particularly warm in July. Most entries (153; 56.4%) received a 3.0 or higher rating and performed well throughout the trial period, and

93 entries (34.3%) received a score of at least 4.0. Highlighted below are top-performing cultivars from specific categories that received a score of 4.0 or more (Table 2). A full list of performance ratings for the evaluation criteria was also included (Table 3).

Table 2. Top-performing trial garden entries for 2024

Type	Rank	Cultivar	Company	Overall Score
sun perennial Y2	1	<i>Caryopteris</i> Gold Crest	Darwin Perennials	4.9
shade container	2	<i>Impatiens</i> Beacon® Bright Red	PanAmerican Seed	4.9
shade container	3	<i>Impatiens</i> Beacon® Otway Mix	PanAmerican Seed	4.9
shade container	4	<i>Impatiens</i> Beacon® Salmon	PanAmerican Seed	4.9
shade container	5	<i>Impatiens</i> Beacon® Violet Shades	PanAmerican Seed	4.9
sun annual	6	<i>Coleus</i> Colorblaze® Mini Me™ Chartreuse	Proven Winners	4.8
sun annual	7	<i>Helianthus</i> Suncredible® Yellow	Proven Winners	4.8
sun annual	8	<i>Coleus</i> Flamethrower™ Adobo Pink	Ball FloraPlant	4.8
sun annual	9	<i>Coleus</i> Marble Mania	Ball FloraPlant	4.8
shade container	10	<i>Impatiens</i> Beacon® Chicago Mix	PanAmerican Seed	4.8
shade container	11	<i>Impatiens</i> Beacon® Coral Improved	PanAmerican Seed	4.8
shade container	12	<i>Impatiens</i> Beacon® Orange	PanAmerican Seed	4.8
shade container	13	<i>Impatiens</i> Beacon® Rose	PanAmerican Seed	4.8
shade container	14	<i>Impatiens</i> Beacon® White Pearl	PanAmerican Seed	4.8
sun perennial Y1	15	<i>Lantana</i> Lucky™ Gold	Ball FloraPlant	4.8
sun perennial Y1	16	<i>Coreopsis</i> Uptick™ Gold	Darwin Perennials	4.7
sun perennial Y1	17	<i>Lantana</i> Passionfruit	Ball FloraPlant	4.7
sun annual	18	<i>Coleus</i> Colorblaze® Lime Time	Proven Winners	4.7
shade annual	19	<i>Coleus</i> Colorblaze® Mini Me™ Watermelon	Proven Winners	4.7
sun annual	20	<i>Alternanthera</i> Purple Prince	PanAmerican Seed	4.7
sun annual	21	<i>Catharanthus</i> Titan-lum™ Apricot	PanAmerican Seed	4.7
sun annual	22	<i>Catharanthus</i> Titan-lum™ Blush	PanAmerican Seed	4.7
sun annual	23	<i>Catharanthus</i> Titan-lum™ White	PanAmerican Seed	4.7
shade container	24	<i>Impatiens</i> Beacon® Lipstick	PanAmerican Seed	4.7
sun annual	25	<i>Catharanthus</i> Titan-lum™ Punch	PanAmerican Seed	4.6
sun perennial Y3	26	<i>Salvia</i> Blue Chill	Ball FloraPlant	4.6
sun annual	27	<i>Coleus</i> Colorblaze® Mini Me™ Watermelon	Proven Winners	4.6
sun annual	28	<i>Catharanthus</i> Titan-lum™ Polka Dot	PanAmerican Seed	4.6
shade container	29	<i>Impatiens</i> Solarscape® XL Lilac Spark	PanAmerican Seed	4.6
sun container	30	<i>Mandevilla</i> Tourmaline Fuchsia	Ball FloraPlant	4.6
sun annual	31	<i>Scaevola</i> Whirlwind® Blue	Proven Winners	4.6
sun annual	32	<i>Catharanthus</i> Titan-lum™ Really Red	PanAmerican Seed	4.6

RESULTS & DISCUSSION

Table 2. Top-performing trial garden entries for 2024

Type	Rank	Cultivar	Company	Overall Score
sun annual	33	<i>Heliotropium</i> Augusta® Lavender	Proven Winners	4.6
shade annual	34	<i>Coleus</i> Colorblaze® Mini Me™ Chartreuse	Proven Winners	4.6
sun container	35	<i>Mandevilla</i> Agate Rose Pink	Ball FloraPlant	4.6
sun container	36	<i>Mandevilla</i> Agate XXL White	Ball FloraPlant	4.5
shade annual	37	<i>Coleus</i> Colorblaze® Lime Time	Proven Winners	4.5
shade container	38	<i>Impatiens</i> Solarscape® XL Pink Jewel	PanAmerican Seed	4.5
sun perennial Y1	39	<i>Salvia</i> Unplugged® White	Proven Winners	4.5
sun perennial Y1	40	<i>Achillea</i> New Vintage™ Terracotta	Darwin Perennials	4.5
sun perennial Y1	41	<i>Cuphea</i> Vermillionaire®	Proven Winners	4.5
sun annual	42	<i>Scaevola</i> Whirlwind® White	Proven Winners	4.5
sun annual	43	<i>Gomphrena</i> Fireworks	PanAmerican Seed	4.4
shade annual	44	<i>Impatiens</i> Beacon® Rose	PanAmerican Seed	4.4
sun perennial Y1	45	<i>Achillea</i> New Vintage™ Violet	Darwin Perennials	4.4
sun annual	46	<i>Portulaca</i> Mojave® Yellow	Proven Winners	4.4
shade container	47	<i>Coleus</i> Premium Sun Coral Candy	PanAmerican Seed	4.4
sun annual	48	<i>Cuphea</i> Enchantia™ White	Ball FloraPlant	4.4
sun annual	49	<i>Helianthus</i> Suncredible® Saturn	Proven Winners	4.4
sun perennial Y1	50	<i>Ageratum</i> Monarch Magic	Ball FloraPlant	4.3
sun annual	51	<i>Catharanthus</i> Titan-lum™ Dark Red	PanAmerican Seed	4.3
sun annual	52	<i>Catharanthus</i> Titan-lum™ Mix	PanAmerican Seed	4.3
shade annual	53	<i>Impatiens</i> Beacon® Salmon	PanAmerican Seed	4.3
shade annual	54	<i>Impatiens</i> Beacon® Violet Shades	PanAmerican Seed	4.3
sun annual	55	<i>Pennisetum</i> Jade Princess	PanAmerican Seed	4.3
sun annual	56	<i>Scaevola</i> Stardiva™ White	Proven Winners	4.3
sun annual	57	<i>Scaevola</i> Whirlwind® Pink	Proven Winners	4.3
sun perennial Y1	58	<i>Veronica</i> Skyward™ Lilac	Darwin Perennials	4.3
shade container	59	<i>Coleus</i> Premium Sun Crimson Gold	PanAmerican Seed	4.3
sun perennial Y2	60	<i>Lagerstroemia</i> Barista® 'Cherry Mocha'	Walter's Gardens	4.3
sun perennial Y2	61	<i>Lagerstroemia</i> Barista® 'Like A Latte'	Walter's Gardens	4.3
sun perennial Y1	62	<i>Buddleia</i> Chrysalis™ Pink	Darwin Perennials	4.3
shade annual	63	<i>Impatiens</i> Beacon® Otway Mix	PanAmerican Seed	4.3
sun perennial Y2	64	<i>Lagerstroemia</i> Barista® 'Sweet Macciato'	Walter's Gardens	4.3
sun container	65	Mixmasters™ Passion Project	Ball FloraPlant	4.3
sun container	66	<i>Begonia</i> Dragon Wing® Pink Bronze Leaf	PanAmerican Seed	4.3
sun container	78	<i>Angelonia</i> Guardian Angel™ Berry Sparkler	Ball FloraPlant	4.1
sun annual	79	<i>Heliotropium</i> Aromagica™ Purple	Proven Winners	4.1
sun perennial Y3	69	<i>Juncus</i> Graceful Grasses® Blue Mohawk	Proven Winners	4.3
sun container	70	<i>Angelonia</i> Angelflare™ Black	Ball FloraPlant	4.2

RESULTS & DISCUSSION

Table 2. Top-performing trial garden entries for 2024

Type	Rank	Cultivar	Company	Overall Score
sun container	71	<i>Lantana</i> Shamrock™ Rose Imp	Ball FloraPlant	4.2
sun perennial Y1	72	<i>Dianthus</i> Jolt™ Pink Magic	PanAmerican Seed	4.2
shade annual	73	<i>Impatiens</i> Beacon® White Pearl	PanAmerican Seed	4.2
sun container	74	Mixmasters™ Summer Splendor	Ball FloraPlant	4.2
sun basket	75	<i>Portulaca</i> Portogrande™ Citrus Crush	Selecta One	4.2
shade annual	76	<i>Impatiens</i> Beacon® Coral Improved	PanAmerican Seed	4.2
sun container	77	<i>Lantana</i> Shamrock™ Red	Ball FloraPlant	4.2
sun container	78	<i>Angelonia</i> Guardian Angel™ Berry Sparkler	Ball FloraPlant	4.1
sun annual	79	<i>Heliotropium</i> Aromagica™ Purple	Proven Winners	4.1
sun annual	80	<i>Scaevola</i> Stardiva™ Blue	Proven Winners	4.1
sun container	81	<i>Angelonia</i> Angelflare™ Orchid Pink	Ball FloraPlant	4.1
shade perennial Y3	82	<i>Tradescantia</i> Proven Accents® Purple Queen	Proven Winners	4.1
sun perennial Y1	83	<i>Achillea</i> 'Firefly Fuchsia'	Walter's Gardens/ Proven Winners	4.1
sun basket	84	<i>Portulaca</i> Portogrande™ Lemon Creamsicle	Selecta One	4.1
sun annual	85	<i>Cuphea</i> Totally Tempted™ Watermelon Wine™	Proven Winners	4.1
sun perennial Y3	86	<i>Hibiscus</i> Summerific® 'Edge Of Night'	Walter's Gardens/ Proven Winners	4.1
sun perennial Y3	87	<i>Salvia</i> Rockin'® Blue Suede Shoes	Proven Winners	4.1
sun perennial Y1	88	<i>Tecoma</i> Kalama™ Blood Orange	Selecta One	4.0
shade perennial Y2	89	<i>Orderia</i> 'Fusion Of Fire'	Walter's Gardens	4.0
sun container	90	<i>Begonia</i> Hula™ Red	PanAmerican Seed	4.0
shade annual	91	<i>Impatiens</i> Beacon® Orange	PanAmerican Seed	4.0
sun annual	92	<i>Scaevola</i> Stardiva™ Pink	Proven Winners	4.0
sun annual	93	<i>Portulaca</i> Mojave® Mango	Proven Winners	4.0

Top Consumer Preference Trial Picks

Entries that were preferred the most by consumers were *Lobelia* Heatopia™ Dark Blue and *Hibiscus* Summerific® 'Valentine's Crush' with nine votes. *Pennisetum* Jade Princess was second place with seven votes. *Hibiscus* Summerific® 'All Eyes On Me' received third place with five votes. These entries performed well during the trial and received an overall average score of 3.7 and above across the season. *Pennisetum* was in the top performing varieties, receiving an overall average score of 4.3.

RESULTS & DISCUSSION

In-Ground Annuals

Of the 79 in-ground sun annual entries, thirty-one received a score of at least 4.0, and thirty-three received an overall score above 3.0. Some top performers were *Coleus* ColorBlaze® Mini Me™ Chartreuse, *Helianthus* Suncredible® Yellow, *Coleus* FlameThrower™ Adobo Pink, and *Coleus* Marble Mania (overall score of 4.8). *Coleus* ColorBlaze® Lime Time, *Alternanthera* Purple Prince, *Catharanthus* Titan-ium™ Apricot, *Catharanthus* Titan-ium™ Blush, and *Catharanthus* Titan-ium™ all received an overall score of 4.7.



Figure 2. Top performing in-ground annuals. (A) *Coleus* ColorBlaze® Mini Me™ Chartreuse, the photo was taken 06/28/2024, overall score 4.8; (B) *Helianthus* Suncredible® Yellow, 06/28/2024, 4.8; (C) *Coleus* FlameThrower™ Adobo Pink, 07/26/2024, 4.8; (D), *Coleus* ColorBlaze® Lime Time 07/12/2024, 4.7; (E) *Alternanthera* Purple Prince 07/12/2024, 4.7; (F) *Catharanthus* Titan-ium™ Apricot 08/23/2024, 4.7.

RESULTS & DISCUSSION

Flowering Annuals

The top performing annuals grown for color (flowering) were *Impatiens* Beacon® Bright Red and *Angelonia* Angelface® Blue, both having a perfect score of 5. Other top performing flowering annuals were *Impatiens* Beacon® Chicago Mix, *Impatiens* Beacon® Rose, *Impatiens* Beacon® Violet Shades, and *Impatiens* Beacon® White Pearl with overall flowering scores of 4.8. The *Impatiens* grown in shade did exceptionally well.



Figure 3. Top performing flowering annuals (A) *Impatiens* Beacon® Bright Red, photo taken 06/28/2024, overall flowering score 5; (B) *Angelonia* Angelface® Blue, 07/26/2024, 5; (C) *Impatiens* Beacon® Chicago Mix, 06/28/2024, 4.8.

RESULTS & DISCUSSION

Containerized Plant Entries

Generally, the containerized plants performed well this year. The *Impatiens* were the best performing in the containers, all receiving an average rating above 4.5. The best performing *Impatiens* varieties include *Impatiens* Beacon® Bright Red, *Impatiens* Beacon® Otway Mix, *Impatiens* Beacon® Salmon, and *Impatiens* Beacon® Violet Shades all receiving an overall rating of 4.9. These varieties of *Impatiens* were grown in shade. *Impatiens* Beacon® was one of the top performing plants across the entire trial, scoring well in all areas. *Coleus* varieties Premium Sun Coral Candy and Sun Crimson Gold also had high ratings of 4.4 and 4.3. Containers were also placed in full sun. Some well performing sun containers were *Mandevilla* Tourmaline Fuchsia, *Mandevilla* Agate Rose Pink, and *Mandevilla* Agate XXL White. These varieties received an overall score of 4.5 or higher.



Figure 4. Top performing containerized plants (A) *Impatiens* Beacon® Salmon, photo taken 05/31/2024, overall flowering score 4.9; (B) *Impatiens* Beacon® Violet Shades 05/31/2024, 4.9; (C) *Coleus* Premium Sun Coral Candy, 05/31/2024, 4.4; (D) *Coleus* Sun Crimson Gold, 06/28/2024, 4.3; (E) *Mandevilla* Tourmaline Fuchsia, 06/28/2024, 4.6; (F) *Mandevilla* Agate Rose Pink, 07/12/2024, 4.6.

RESULTS & DISCUSSION

Shade Annuals

The top-performing shade annual was *Coleus ColorBlaze® Mini Me™ Watermelon* with an overall rating of 4.7. *Coleus ColorBlaze® Mini Me™ Chartreuse* and *Coleus ColorBlaze® Lime Time* were not far behind with overall ratings of 4.6 and 4.5. The next top performing plant was *Impatiens Beacon® Rose* with an overall rating of 4.4. Overall, the shade annuals performed better this year than previous years.



Figure 5. Top performing shade annuals (A) *Coleus ColorBlaze® Mini Me™ Watermelon*, Photo taken 07/26/2024, Overall score 4.7; (B) *Coleus ColorBlaze® Mini Me™ Chartreuse*, 06/28/2024, 4.6; (C) *Impatiens Beacon® Rose*, 06/28/2024, 4.4.

RESULTS & DISCUSSION

Sun Perennials

A total of 112 sun perennials were grown with an average overall rating of 3.3, with 21 plants receiving an overall score of 4.0 or higher. *Caryopteris* Gold Crest was not only the highest overall rate of the sun perennials, but it was the best-performing plant across the entire trial (overall rating of 4.9). The *Caryopteris* is a second-year perennial. The *Lantana* Lucky™ Gold performed almost as well as the *Caryopteris*, with an overall rating of 4.8. The next best-performing varieties, with an overall rating of 4.7, were *Coreopsis* UpTick™ Gold and *Lantana* PassionFruit.



Figure 6. Top-performing sun perennials. (A) *Caryopteris* Gold Crest, the photo was taken 06/17/2024, 4.9; (B) *Lantana* Lucky™ Gold, 08/09/2024, 4.8; (C) *Coreopsis* UpTick™ Gold, 05/31/2024, 4.7; (D) *Lantana* PassionFruit, 08/09/2024, 4.7.

RESULTS & DISCUSSION

Shade Perennials

The shade perennials did not perform as well as the sun perennials. Of the four shade perennial cultivars, the overall score was 3.1. Only two varieties out of the total four shade perennials received a score of 4.0 or higher. These include *Tradescantia* Proven Accents® Purple Queen and *Ordernia* 'Fusion of Fire', receiving scores of 4.1 and 4.0. *Tradescantia* is a year three perennial, and *Ordernia* is a year two perennial.



Figure 7. Top performing shade perennials (A) *Tradescantia* Proven Accents® Purple Queen, photo taken 07/26/2024, overall score 4.0; (B) *Ordernia* 'Fusion of Fire', 05/02/2024, 4.0.

RESULTS & DISCUSSION

Table 3. Average criteria scoring for all 2024 trial entries.

Cultivar	Type	Leaf	Flower	Landscape Impact	Average
<i>Achillea</i> 'Firefly Fuchsia'	sun perennial Y1	4.9	3.9	3.6	4.1
<i>Achillea</i> 'Firefly Red Pop'	sun perennial Y1	4.7	3.5	3.2	3.8
<i>Achillea</i> Milly Rock™ Yellow Terracotta	sun perennial Y3	2.5	2.8	2.2	2.5
<i>Achillea</i> New Vintage™ Terracotta	sun perennial Y1	4.9	4.3	4.3	4.5
<i>Achillea</i> New Vintage™ Violet	sun perennial Y1	4.9	4.1	4.2	4.4
<i>Agastache</i> Meant To Bee™ Queen Nectarine	sun perennial Y3	3.0	3.2	2.9	3.0
<i>Agastache</i> Summerlong™ Lemon	sun perennial Y1	2.8	4.0	2.3	2.8
<i>Ageratum</i> Monarch Magic	sun perennial Y1	2.5	2.4	2.2	2.3
<i>Ageratum</i> Monarch Magic	sun basket	4.8	4.2	4.0	4.3
<i>Alternanthera</i> Purple Prince	sun annual	5.0	5.0	4.3	4.7
<i>Angelonia</i> Angelface® Blue	sun annual	5.0	3.1	3.1	3.8
<i>Angelonia</i> Angelface® Perfectly Pink	sun annual	4.9	2.9	3.0	3.7
<i>Angelonia</i> Angelface® Wedgwood Blue	sun annual	4.9	2.6	2.9	3.6
<i>Angelonia</i> Angelface® Wedgwood Pink	sun annual	5.0	2.7	3.1	3.7
<i>Angelonia</i> Angelface® White Improved	sun annual	5.0	3.3	3.3	3.9
<i>Angelonia</i> Angelflare™ Black	sun container	5.0	4.2	3.7	4.2
<i>Angelonia</i> Angelflare™ Orchid Pink	sun container	4.8	3.9	3.8	4.1
<i>Angelonia</i> Guardian Angel™ Berry Sparkler	sun annual	5.2	2.3	3.2	3.7
<i>Angelonia</i> Guardian Angel™ Berry Sparkler	sun container	5.0	4.0	3.6	4.1
<i>Angelonia</i> Guardian Angel™ Blue	sun annual	5.1	2.9	3.5	3.9
<i>Angelonia</i> Guardian Angel™ Blue	sun container	5.0	3.0	3.0	3.7
<i>Armeria</i> Dreameria® Hypnotic Dreams	sun perennial Y1	2.4	2.0	1.6	2.0
<i>Artemisia</i> 'Silver Lining'	sun perennial Y2	3.2	--	3.3	3.2
<i>Astilbe</i> 'Dark Side Of The Moon'	sun perennial Y3	4.2	3.0	3.9	3.9
<i>Baptisia</i> 'Grape Escape'	sun perennial Y2	2.3	2.0	2.0	2.1
<i>Begonia</i> Dragon Wing® Pink Bronze Leaf	sun container	4.3	4.3	4.2	4.3
<i>Begonia</i> Hula™ Pink	sun annual	3.7	3.5	2.9	3.3
<i>Begonia</i> Hula™ Pink	sun container	3.8	4.0	3.7	3.8
<i>Begonia</i> Hula™ Red	sun annual	3.9	3.9	3.6	3.8
<i>Begonia</i> Hula™ Red	sun container	3.9	4.1	4.0	4.0
<i>Begonia</i> Hula™ Red And White Mix	sun annual	4.1	3.8	3.6	3.8
<i>Begonia</i> Hula™ White	sun annual	4.0	3.8	3.6	3.8
<i>Begonia</i> Hula™ White	sun container	3.7	4.0	3.7	3.8
<i>Begonia</i> Space Age™ Black Hole™	shade annual	3.9	--	3.0	3.4
<i>Begonia</i> Space Age™ Europa™	shade annual	3.8	1.0	2.6	3.2
<i>Begonia</i> Space Age™ Triton™	shade annual	3.8	1.0	2.7	3.3
<i>Buddleia</i> 'Cherry Royale'	sun perennial Y1	2.5	3.1	2.3	2.6

RESULTS & DISCUSSION

Table 3. Average criteria scoring for all 2024 trial entries.

Cultivar	Type	Leaf	Flower	Landscape Impact	Average
<i>Buddleia</i> Chrysalis™ Pink	sun perennial Y1	5.0	3.8	4.1	4.3
<i>Buddleia</i> Chrysalis™ Steel Blue	sun perennial Y1	3.0	3.1	2.2	2.7
<i>Calibrachoa</i> Minifamous® Neo Red Shuffle	sun basket	3.4	3.1	3.1	3.2
<i>Calibrachoa</i> Minifamous® Uno Pink Starfruit	sun basket	2.8	2.8	2.7	2.7
<i>Campanula</i> Mini Marvels™ 'Starbright'	sun perennial Y1	1.7	1.3	1.3	1.4
<i>Caryopteris</i> Emerald Crest	sun perennial Y2	1.1	1.0	1.1	1.1
<i>Caryopteris</i> Gold Crest	sun perennial Y2	5.0	4.4	4.9	4.9
<i>Catharanthus</i> Titan-lum™ Apricot	sun annual	5.0	4.6	4.4	4.7
<i>Catharanthus</i> Titan-lum™ Blush	sun annual	5.0	4.6	4.4	4.7
<i>Catharanthus</i> Titan-lum™ Dark Red	sun annual	4.3	4.3	4.3	4.3
<i>Catharanthus</i> Titan-lum™ Mix	sun annual	4.3	4.3	4.3	4.3
<i>Catharanthus</i> Titan-lum™ Polka Dot	sun annual	4.7	4.7	4.4	4.6
<i>Catharanthus</i> Titan-lum™ Punch	sun annual	5.0	4.5	4.4	4.6
<i>Catharanthus</i> Titan-lum™ Really Red	sun annual	4.8	4.5	4.4	4.6
<i>Catharanthus</i> Titan-lum™ White	sun annual	5.0	4.6	4.4	4.7
<i>Coleus</i> Colorblaze® Lime Time	sun annual	5.0	3.0	4.8	4.5
<i>Coleus</i> Colorblaze® Lime Time	shade annual	4.9	2.5	4.9	4.7
<i>Coleus</i> Colorblaze® Mini Me™ Chartreuse	sun annual	5.0	3.5	4.8	4.6
<i>Coleus</i> Colorblaze® Mini Me™ Chartreuse	shade annual	4.8	--	4.9	4.8
<i>Coleus</i> Colorblaze® Mini Me™ Watermelon	sun annual	5.0	5.0	4.4	4.7
<i>Coleus</i> Colorblaze® Mini Me™ Watermelon	shade annual	4.9	--	4.3	4.6
<i>Coleus</i> Flamethrower™ Adobo Pink	sun annual	4.9	--	4.7	4.8
<i>Coleus</i> Marble Mania	sun annual	4.9	--	4.7	4.8
<i>Coleus</i> Premium Sun Coral Candy	shade container	4.8	3.3	4.6	4.4
<i>Coleus</i> Premium Sun Crimson Gold	shade container	4.8	3.3	4.3	4.3
<i>Coreopsis</i> Candlelight™	sun perennial Y3	3.6	3.4	1.7	2.7
<i>Coreopsis</i> Designer Threads™ 'Golden Needles'	sun perennial Y1	4.6	3.6	3.7	3.9
<i>Coreopsis</i> Designer Threads™ 'Scarlet Ribbons'	sun perennial Y1	4.7	3.7	3.4	3.9
<i>Coreopsis</i> Uptick™ Gold	sun perennial Y1	5.0	4.6	4.7	4.7
<i>Cuphea</i> Enchantia™ Lavender	sun annual	5.0	3.9	3.9	4.3
<i>Cuphea</i> Enchantia™ White	sun annual	5.0	4.2	3.9	4.4
<i>Cuphea</i> Totally Tempted™ Frosted Violets	sun annual	3.6	3.4	3.2	3.4
<i>Cuphea</i> Totally Tempted™ Watermelon Wine™	sun annual	4.0	4.2	4.0	4.1
<i>Cuphea</i> Vermillionaire®	sun perennial Y1	4.7	4.4	4.3	4.5
<i>Dahlia</i> City Lights™ Apricot Glow	sun annual	3.8	2.8	2.9	3.2
<i>Dahlia</i> Venti™ Magenta+White Eye	sun annual	4.4	2.8	3.3	3.5
<i>Dahlia</i> Virtuoso™ Classy Carmine™	sun annual	3.7	3.0	3.1	3.2

RESULTS & DISCUSSION

Table 3. Average criteria scoring for all 2024 trial entries.

Cultivar	Type	Leaf	Flower	Landscape Impact	Average
<i>Dahlia</i> Virtuoso™ Dayglo Yellow™	sun annual	2.9	2.4	2.4	2.6
<i>Dahlia</i> Virtuoso™ Merry Magenta™	sun annual	3.2	3.0	2.6	2.8
<i>Dahlia</i> Virtuoso™ Pinkerific™	sun annual	3.4	2.7	2.6	2.9
<i>Dahlia</i> Virtuoso™ Vibrant Violet™	sun annual	3.9	2.7	3.1	3.2
<i>Dahlia</i> White Colored Flowers	sun annual	3.4	2.6	2.6	2.9
<i>Delosperma</i> Kaleidoscope™ 'Dancing Embers'	sun perennial Y1	4.2	2.5	2.6	3.1
<i>Delosperma</i> Kaleidoscope™ 'Razzle Dazzle'	sun perennial Y1	4.3	2.0	2.4	3.0
<i>Delosperma</i> Ocean Sunset™ Violet Flare	sun perennial Y1	4.2	2.8	2.9	3.3
<i>Dianthus</i> Fruit Punch® 'Funky Fuchsia'	sun perennial Y3	4.2	1.9	1.8	2.8
<i>Dianthus</i> Jolt™ Pink Magic	sun perennial Y1	4.8	4.1	3.8	4.2
<i>Dichondra</i> Silver Falls	sun basket	3.9		3.2	3.6
<i>Digitalis</i> Arctic Fox™ Lemon Cream	sun perennial Y1	2.2	2.3	2.1	2.1
<i>Digitalis</i> Arctic Fox™ Rose	sun perennial Y1	3.2	3.4	2.7	3.0
<i>Echinacea</i> Artisan™ Red Ombre	sun perennial Y3	3.2	2.3	2.2	2.6
<i>Echinacea</i> Artisan™ Soft Orange	sun perennial Y3	4.4	3.8	3.0	3.7
<i>Echinacea</i> Artisan™ Soft Orange	sun perennial Y1	3.2	2.7	2.2	2.7
<i>Echinacea</i> Artisan™ Yellow Ombre	sun perennial Y3	4.4	4.0	3.0	3.7
<i>Echinacea</i> Artisan™ Yellow Ombre	sun perennial Y1	3.8	2.3	1.9	2.8
<i>Echinacea</i> Color Coded® 'The Fuchsia Is Bright'	sun perennial Y3	3.1	2.5	2.2	2.7
<i>Echinacea</i> Double Dipped™ 'Watermelon Sugar'	sun perennial Y2	2.4	1.6	1.6	1.9
<i>Echinacea</i> Double Scoop™ Orangeberry Deluxe	sun perennial Y2	3.8	3.3	2.8	3.3
<i>Echinacea</i> Double Scoop™ Raspberry Deluxe	sun perennial Y2	3.9	3.4	3.2	3.5
<i>Echinacea</i> Double Scoop™ Strawberry Deluxe	sun perennial Y2	2.8	3.6	2.2	2.6
<i>Echinacea</i> Double Scoop™ Watermelon Deluxe	sun perennial Y2	3.6	3.3	2.9	3.3
<i>Echinacea</i> Sombrero® Adobe Orange	sun perennial Y2	3.8	3.9	3.2	3.6
<i>Echinacea</i> Sombrero® Rosada	sun perennial Y2	2.8	2.7	2.0	2.4
<i>Echinacea</i> Sombrero® Salsa Red	sun perennial Y2	3.4	3.0	2.8	3.0
<i>Eucomis</i> Crowning Glory™ 'Purple Reign'	sun perennial Y2	2.6	--	1.6	2.1
<i>Gomphrena</i> Fireworks	sun annual	5.0	4.1	4.2	4.4
<i>Helianthus</i> Suncredible® Saturn	sun annual	4.3	4.4	4.4	4.4
<i>Helianthus</i> Suncredible® Yellow	sun annual	4.9	4.8	4.8	4.8
<i>Heliopsis</i> 'Touch Of Blush'	sun perennial Y1	3.1	3.2	3.1	3.1
<i>Heliotropium</i> Aromagica™ Purple	sun annual	4.7	3.8	4.0	4.1
<i>Heliotropium</i> Augusta® Lavender	sun annual	4.9	4.4	4.4	4.6
<i>Hemerocallis</i> Rainbow Rhythm® 'Blazing Glory'	sun perennial Y2	4.8	3.3	3.2	3.8
<i>Heuchera</i> 'Ball Gown'	shade perennial Y3	1.9	--	1.3	1.6
<i>Hibiscus</i> 'Marshmallow Moon'	sun perennial Y2	4.2	2.5	3.2	3.4

RESULTS & DISCUSSION

Table 3. Average criteria scoring for all 2024 trial entries.

Cultivar	Type	Leaf	Flower	Landscape Impact	Average
<i>Hibiscus</i> Head Over Heels® Adore™	sun perennial Y2	4.4	3.0	3.9	3.9
<i>Hibiscus</i> Head Over Heels® Blush	sun perennial Y2	4.3	3.3	3.6	3.8
<i>Hibiscus</i> Head Over Heels® Passion™	sun perennial Y2	1.1	1.0	1.0	1.1
<i>Hibiscus</i> Summerific® 'All Eyes On Me'	sun perennial Y2	4.3	3.1	3.6	3.7
<i>Hibiscus</i> Summerific® 'Edge Of Night'	sun perennial Y3	4.4	3.0	4.2	4.1
<i>Hibiscus</i> Summerific® 'Valentine's Crush'	sun perennial Y3	4.4	3.0	3.6	3.8
<i>Impatiens</i> Beacon® Bright Red	shade annual	3.7	4.3	3.7	3.8
<i>Impatiens</i> Beacon® Bright Red	shade container	5.0	4.8	4.8	4.9
<i>Impatiens</i> Beacon® Chicago Mix	shade annual	3.6	3.8	3.7	3.7
<i>Impatiens</i> Beacon® Chicago Mix	shade container	5.0	4.7	4.7	4.8
<i>Impatiens</i> Beacon® Coral Improved	shade annual	4.2	4.1	4.2	4.2
<i>Impatiens</i> Beacon® Coral Improved	shade container	5.0	4.7	4.7	4.8
<i>Impatiens</i> Beacon® Lipstick	shade annual	4.3	4.2	4.2	4.3
<i>Impatiens</i> Beacon® Lipstick	shade container	4.9	4.6	4.6	4.7
<i>Impatiens</i> Beacon® Orange	shade annual	4.1	4.3	3.9	4.0
<i>Impatiens</i> Beacon® Orange	shade container	5.0	4.7	4.7	4.8
<i>Impatiens</i> Beacon® Otway Mix	shade annual	4.3	4.3	4.2	4.3
<i>Impatiens</i> Beacon® Otway Mix	shade container	5.0	4.8	4.8	4.9
<i>Impatiens</i> Beacon® Rose	shade annual	4.4	4.4	4.4	4.4
<i>Impatiens</i> Beacon® Rose	shade container	5.0	4.7	4.7	4.8
<i>Impatiens</i> Beacon® Salmon	shade annual	4.4	4.3	4.2	4.3
<i>Impatiens</i> Beacon® Salmon	shade container	5.0	4.8	4.8	4.9
<i>Impatiens</i> Beacon® Violet Shades	shade annual	4.4	4.2	4.3	4.3
<i>Impatiens</i> Beacon® Violet Shades	shade container	5.0	4.8	4.8	4.9
<i>Impatiens</i> Beacon® White Pearl	shade annual	4.4	4.1	4.0	4.2
<i>Impatiens</i> Beacon® White Pearl	shade container	5.0	4.7	4.7	4.8
<i>Impatiens</i> Rockapulco® Appleblossom Improved	shade annual	4.0	3.4	3.3	3.6
<i>Impatiens</i> Rockapulco® Red Improved	shade annual	3.9	3.8	3.8	3.8
<i>Impatiens</i> Rockapulco® Rose Improved	shade annual	3.9	3.4	3.4	3.6
<i>Impatiens</i> Solarscape® XL Lilac Spark	sun annual	5.0	4.3	4.4	4.6
<i>Impatiens</i> Solarscape® XL Lilac Spark	shade container	2.9	2.7	2.5	2.7
<i>Impatiens</i> Solarscape® XL Pink Jewel	sun annual	5.0	4.2	4.3	4.5
<i>Impatiens</i> Solarscape® XL Pink Jewel	shade container	2.9	2.8	2.3	2.6
<i>Juncus</i> Graceful Grasses® Blue Mohawk	sun perennial Y3	4.7	--	3.8	4.3
<i>Juncus</i> Graceful Grasses® Curly Wurly	sun perennial Y3	4.3	--	2.1	3.2
<i>Kniphofia</i> Glowstick	sun perennial Y3	3.2	2.9	2.6	2.8

RESULTS & DISCUSSION

Table 3. Average criteria scoring for all 2024 trial entries.

Cultivar	Type	Leaf	Flower	Landscape Impact	Average
<i>Lagerstroemia</i> Barista® ‘Cherry Mocha’	sun perennial Y2	4.7	3.5	4.3	4.3
<i>Lagerstroemia</i> Barista® ‘Like A Latte’	sun perennial Y2	4.7	3.4	4.3	4.3
<i>Lagerstroemia</i> Barista® ‘Sweet Macciato’	sun perennial Y2	4.7	3.5	4.3	4.3
<i>Lantana</i> Little Lucky™ White	sun perennial Y3	3.8	4.3	2.6	3.3
<i>Lantana</i> Lucky™ Gold	sun perennial Y1	5.0	4.9	4.4	4.8
<i>Lantana</i> Luscious® Basket Tangelo™	sun perennial Y3	4.3	4.2	3.4	3.8
<i>Lantana</i> Luscious® Royale Lemon Tart™	sun perennial Y3	4.6	3.7	3.4	3.8
<i>Lantana</i> Luscious® Royale Red Zone	sun perennial Y3	4.7	3.2	3.4	3.8
<i>Lantana</i> Passionfruit	sun perennial Y1	2.4	2.4	2.4	2.3
<i>Lantana</i> Passionfruit	sun basket	5.0	4.7	4.5	4.7
<i>Lantana</i> Shamrock™ Butterscotch Glow	sun perennial Y3	4.7	3.1	3.1	3.6
<i>Lantana</i> Shamrock™ Peach Improved	sun perennial Y3	4.6	3.6	3.2	3.7
<i>Lantana</i> Shamrock™ Red	sun perennial Y2	4.8	4.0	3.9	4.2
<i>Lantana</i> Shamrock™ Red	sun container	3.6	3.5	2.3	2.8
<i>Lantana</i> Shamrock™ Rose Gold	sun perennial Y2	3.6	2.8	2.2	2.7
<i>Lantana</i> Shamrock™ Rose Imp	sun container	5.0	3.7	4.0	4.2
<i>Lavandula</i> Annet	sun perennial Y1	3.4	--	2.3	2.8
<i>Lavandula</i> Anouk Purple Medley	sun perennial Y2	4.1	3.8	3.7	3.7
<i>Lavandula</i> Anouk Twilight	sun perennial Y2	4.0	4.0	3.7	3.7
<i>Lavandula</i> Superblue	sun perennial Y1	3.3	3.6	2.6	2.9
<i>Lobelia</i> Heatopia™ Dark Blue	sun annual	3.6	4.8	3.3	3.9
<i>Lobelia</i> Heatopia™ Dark Blue	sun basket	2.4	2.7	2.4	2.4
<i>Mandevilla</i> Agate Rose Pink	sun container	5.0	4.1	4.6	4.6
<i>Mandevilla</i> Agate XXL White	sun container	5.0	4.3	4.4	4.5
<i>Mandevilla</i> Tourmaline Fuchsia	sun container	5.0	4.2	4.6	4.6
Mixmasters™ Passion Project	sun container	4.9	3.9	4.1	4.3
Mixmasters™ Summer Splendor	sun container	4.8	3.9	3.9	4.2
Mixmasters™ We’ve Got Flare	sun container	4.7	3.3	3.4	3.8
<i>Monarda</i> Upscale™ ‘Lavender Taffeta’	sun perennial Y3	3.2	3.7	2.6	2.8
<i>Monarda</i> Upscale™ ‘Pink Chenille’	sun perennial Y3	3.3	4.0	2.7	3.0
<i>Monarda</i> Upscale™ ‘Red Velvet’	sun perennial Y3	3.4	3.2	3.2	3.2
<i>Nemesia</i> Blue Bird Improved	sun annual	3.4	3.7	2.7	3.1
<i>Nepeta</i> ‘Chartreuse On The Loose’	sun perennial Y2	3.2	2.5	3.2	3.0
<i>Nepeta</i> Junior Walker™	sun perennial Y1	2.9	3.3	2.5	2.6
<i>Ocimum</i> Everleaf Lemon	edible	4.7	3.1	3.6	3.9
<i>Orderia</i> ‘Fusion Of Fire’	shade perennial Y2	4.6	--	3.5	4.0

RESULTS & DISCUSSION

Table 3. Average criteria scoring for all 2024 trial entries.

Cultivar	Type	Leaf	Flower	Landscape Impact	Average
<i>Pelargonium Solera</i> [™] Fuchsia	sun container	3.7	2.9	3.2	3.3
<i>Pelargonium Solera</i> [™] Fuschia	sun annual	4.2	3.4	3.4	3.6
<i>Pelargonium Solera</i> [™] Lavender	sun annual	4.0	3.3	3.0	3.4
<i>Pelargonium Solera</i> [™] Lavender	sun container	3.7	2.8	3.1	3.2
<i>Pelargonium Solera</i> [™] Orange	sun annual	3.9	3.2	3.1	3.4
<i>Pelargonium Solera</i> [™] Orange	sun container	3.7	3.2	3.2	3.4
<i>Pelargonium Solera</i> [™] Red	sun annual	3.7	3.6	3.1	3.4
<i>Pelargonium Solera</i> [™] Red	sun container	3.7	3.0	3.2	3.3
<i>Pelargonium Solera</i> [™] Watermelon	sun annual	3.7	3.3	2.8	3.1
<i>Pelargonium Solera</i> [™] Watermelon	sun container	3.7	3.4	3.2	3.3
<i>Pennisetum Jade Princess</i>	sun annual	3.6	4.8	4.7	4.3
<i>Penstemon Bejeweled</i> [™] 'Rose Rhinestones'	sun perennial Y1	3.4	3.0	2.2	2.8
<i>Perovskia Crazyblue</i>	sun perennial Y2	3.4	3.4	2.4	3.0
<i>Petunia E3 Easy Wave</i> [®] Peppermint Mix	sun annual	3.2	2.7	2.5	2.8
<i>Petunia E3 Easy Wave</i> [®] Peppermint Mix	sun basket	3.3	3.2	2.9	3.2
<i>Petunia E3 Easy Wave</i> [®] Red White And Blue Mix	sun annual	3.3	2.8	2.7	2.9
<i>Petunia E3 Easy Wave</i> [®] Red White And Blue Mix	sun basket	3.2	3.2	2.9	3.1
<i>Petunia E3 Easy Wave</i> [®] Rose Morn	sun annual	3.5	2.9	2.9	3.1
<i>Petunia E3 Easy Wave</i> [®] Rose Morn	sun basket	3.0	3.1	2.9	3.0
<i>Petunia Easy Wave</i> [®] Burgundy Velour	sun annual	3.2	2.6	2.6	2.8
<i>Petunia Easy Wave</i> [®] Burgundy Velour	sun basket	3.2	2.9	2.7	2.9
<i>Petunia Easy Wave</i> [®] Navy Velour	sun annual	3.2	2.5	2.4	2.7
<i>Petunia Easy Wave</i> [®] Navy Velour	sun basket	3.1	2.8	2.6	2.8
<i>Petunia Easy Wave</i> [®] Neon Rose	sun annual	2.9	2.8	2.7	2.8
<i>Petunia Easy Wave</i> [®] Neon Rose	sun basket	3.0	3.4	3.1	3.2
<i>Petunia Easy Wave</i> [®] Pink Passion	sun annual	3.1	2.8	2.5	2.8
<i>Petunia Easy Wave</i> [®] Pink Passion	sun basket	3.2	3.3	3.0	3.2
<i>Petunia Easy Wave</i> [®] Red Velour	sun annual	2.6	1.9	1.9	2.2
<i>Petunia Easy Wave</i> [®] Red Velour	sun basket	3.0	2.4	2.4	2.6z
<i>Petunia Easy Wave</i> [®] Rose	sun annual	2.6	2.2	2.0	2.3
<i>Petunia Easy Wave</i> [®] Rose	sun basket	3.3	3.1	3.1	3.2
<i>Petunia Heartwheel</i>	sun basket	3.0	3.3	2.9	3.1
<i>Petunia Supertunia Mini Vista</i> [®] Plum Veined	sun annual	3.6	3.2	3.2	3.3
<i>Petunia Supertunia Mini Vista</i> [®] Yellow	sun annual	3.8	4.1	3.8	3.9
<i>Petunia Supertunia Tiara</i> [™] Blue	sun annual	3.9	3.9	3.5	3.8
<i>Petunia Supertunia Tiara</i> [™] Pink	sun annual	3.6	3.2	3.1	3.3

RESULTS & DISCUSSION

Table 3. Average criteria scoring for all 2024 trial entries.

Cultivar	Type	Leaf	Flower	Landscape Impact	Average
<i>Petunia</i> Supertunia Vista® Bubblegum	sun annual	4.0	3.6	3.6	3.7
<i>Petunia</i> Supertunia® Bermuda Beach Improved	sun annual	3.3	2.7	2.7	2.9
<i>Phlox</i> 'Opening Act Romance'	sun perennial Y3	4.2	3.2	3.4	3.6
<i>Phlox</i> Luminary® 'Prismatic Pink'	sun perennial Y2	4.4	3.8	3.1	3.8
<i>Portulaca</i> Mojave® Fuchsia Improved	sun annual	4.0	4.0	3.7	3.9
<i>Portulaca</i> Mojave® Mango	sun annual	4.1	4.0	3.8	4.0
<i>Portulaca</i> Mojave® Pink	sun annual	4.3	3.6	3.6	3.8
<i>Portulaca</i> Mojave® Red	sun annual	4.3	3.4	3.4	3.7
<i>Portulaca</i> Mojave® Tangerine Improved	sun annual	3.9	3.6	3.4	3.6
<i>Portulaca</i> Mojave® Yellow	sun annual	4.4	4.3	4.4	4.4
<i>Portulaca</i> Portogrande™ Citrus Crush	sun basket	4.6	4.0	4.0	4.2
<i>Portulaca</i> Portogrande™ Lemon Creamsicle	sun basket	4.6	3.9	3.9	4.1
<i>Rudbeckia</i> Goldblitz	sun perennial Y3	4.8	2.9	3.3	3.7
<i>Salvia</i> Blue By You	sun perennial Y2	3.3	2.8	2.6	2.8
<i>Salvia</i> Blue By You	sun perennial Y1	3.9	2.4	2.7	3.0
<i>Salvia</i> Blue Chill	sun perennial Y3	5.0	4.4	4.4	4.6
<i>Salvia</i> Rockin'® Blue Suede Shoes	sun perennial Y3	4.3	3.7	4.2	4.1
<i>Salvia</i> Silver Scent	edible Y2	1.9	--	1.5	1.7
<i>Salvia</i> Unplugged® Red	sun perennial Y1	3.0	3.0	2.8	2.9
<i>Salvia</i> Unplugged® So Blue	sun perennial Y1	3.0	4.0	2.7	2.9
<i>Salvia</i> Unplugged® White	sun perennial Y1	4.8	4.3	4.4	4.5
<i>Scaevola</i> Pink Brilliance	sun basket	3.4	3.1	3.0	3.2
<i>Scaevola</i> Stardiva™ Blue	sun annual	4.1	4.4	3.9	4.1
<i>Scaevola</i> Stardiva™ Pink	sun annual	3.9	4.4	3.6	4.0
<i>Scaevola</i> Stardiva™ White	sun annual	4.3	4.6	4.1	4.3
<i>Scaevola</i> Whirlwind® Blue	sun annual	5.0	4.3	4.4	4.6
<i>Scaevola</i> Whirlwind® Pink	sun annual	4.8	4.0	4.2	4.3
<i>Scaevola</i> Whirlwind® White	sun annual	5.0	4.2	4.2	4.5
<i>Sedum</i> Shamrock	sun perennial Y1	2.3	1.0	1.2	1.8
<i>Sedum</i> Yellow Diamonds	sun perennial Y3	3.4	--	1.6	2.5
<i>Spigelia</i> 'Apple Slices'	sun perennial Y1	4.4	--	1.6	3.0
<i>Spigelia</i> 'Apple Slices'	shade perennial Y1	3.7	1.5	1.6	2.6
<i>Stachys</i> Little Lamb	sun perennial Y2	2.0	--	1.7	1.9
<i>Stokesia</i> Totally Stoked™ 'Riptide'	sun perennial Y1	4.1	2.7	3.2	3.4
<i>Tecoma</i> Kalama™ Blood Orange	sun perennial Y1	5.0	3.6	3.6	4.0
<i>Tecoma</i> Kalama™ Pomegranate	sun perennial Y1	3.8	4.0	3.2	3.4

RESULTS & DISCUSSION

Table 3. Average criteria scoring for all 2024 trial entries.

Cultivar	Type	Leaf	Flower	Landscape Impact	Average
<i>Thalictrum</i> 'Cotton Candy'	sun perennial Y1	2.7	--	1.9	2.3
<i>Tradescantia</i> Proven Accents® Purple Queen	shade perennial Y3	4.9	2.0	3.7	4.1
Trixi® Berry Vibes	sun basket	2.4	2.5	2.4	2.4
Trixi® Evo-Centric	sun basket	3.8	3.9	3.4	3.5
Trixi® Mulberry Street	sun basket	2.7	2.8	2.7	2.7
Trixi® Prime Suspect	sun basket	3.1	3.3	3.1	3.2
Trixi® Spring Symphony	sun basket	2.4	2.3	2.3	2.4
<i>Verbena</i> Endurascape™ Purple Fizz	sun perennial Y2	4.0	3.3	3.3	3.5
<i>Verbena</i> Superbena® Cherryburst	sun perennial Y2	2.3	1.8	1.3	1.7
<i>Verbena</i> Superbena® Pink Cashmere™	sun perennial Y2	4.1	2.8	3.0	3.3
<i>Verbena</i> Superbena® Sparkling® Amethyst	sun perennial Y2	3.9	2.5	2.9	3.1
<i>Veronica</i> Moody Blues® Dark Blue Improved	sun perennial Y2	4.4	3.2	3.4	3.7
<i>Veronica</i> Moody Blues® Dark Pink	sun perennial Y2	4.3	3.1	3.2	3.6
<i>Veronica</i> Skyward™ Blue	sun perennial Y3	4.6	3.3	3.7	3.9
<i>Veronica</i> Skyward™ Lilac	sun perennial Y1	4.7	4.1	4.2	4.3
<i>Veronica</i> Skyward™ Pink	sun perennial Y3	4.7	3.2	3.3	3.7

REFERENCES

Hamrick, D., 2003. Ball Redbook, crop production, Volume: 2. Batavia: Ball Publishing.





The mission of the Mississippi Agricultural and Forestry Experiment Station and the College of Agriculture and Life Sciences is to advance agriculture and natural resources through teaching and learning, research and discovery, service and engagement which will enhance economic prosperity and environmental stewardship, to build stronger communities and improve the health and well-being of families, and to serve people of the state, the region and the world.

Scott Willard, Director

mafes.msstate.edu

Mention of a trademark or proprietary product does not constitute a guarantee or warranty of the product by the Mississippi Agricultural and Forestry Experiment Station and does not imply its approval to the exclusion of other products that also may be suitable.

Mississippi State University is an equal opportunity institution. Discrimination is prohibited in university employment, programs or activities based on race, color, ethnicity, sex, pregnancy, religion, national origin, disability, age, sexual orientation, genetic information, status as a U.S. veteran, or any other status to the extent protected by applicable law. Questions about equal opportunity programs or compliance should be directed to the Office of Civil Rights Compliance, 231 Famous Maroon Band Street, P.O. 6044, Mississippi State, MS 39762, (662) 325-5839.