

2025 SPRING-SUMMER ORNAMENTAL TRIALS: TOP PERFORMERS

Research Bulletin 1259 • APRIL 2026



MISSISSIPPI STATE UNIVERSITY[™]
MS AGRICULTURAL AND
FORESTRY EXPERIMENT STATION

NOTE TO USER

This Mississippi Agricultural and Forestry Experiment Station Bulletin is a summary of research. It is intended for colleagues, cooperators, and sponsors. The interpretation of data presented in this report may change after additional experimentation. Information included is not to be construed as a recommendation for use or as an endorsement of a specific product by Mississippi State University or the Mississippi Agricultural and Forestry Experiment Station.

This report contains data generated as part of the Mississippi Agricultural and Forestry Experiment Station research program. Trade names of commercial products used in this report are included only for clarity and understanding.

ACKNOWLEDGEMENTS

This work was supported in part by the USDA National Institute of Food and Agriculture, Hatch project 7007769.

2025 Spring-Summer Ornamental Trials: Top Performers

SHAUN R. BRODERICK

ASSOCIATE RESEARCH AND EXTENSION PROFESSOR
DEPARTMENT OF PLANT AND SOIL SCIENCES
MAFES TRUCK CROPS BRANCH
MISSISSIPPI STATE UNIVERSITY

ERIKA SWEETEN

RESEARCH ASSOCIATE I
MAFES TRUCK CROPS BRANCH
MISSISSIPPI STATE UNIVERSITY

This document was approved for publication as Bulletin 1256 of the Mississippi Agricultural and Forestry Experiment Station. It was published by Agricultural and Natural Resources Marketing.

Copyright 2026 by Mississippi State University. All rights reserved. This publication may be copied and distributed without alteration for nonprofit educational purposes, provided that credit is given to the Mississippi Agricultural and Forestry Experiment Station.

ABSTRACT

Each year, new ornamental cultivars enter the horticultural market, yet their adaptability to the environmental conditions of central Mississippi remains largely untested. This study evaluated the spring and summer performance of 181 bedding and garden plant cultivars at the MAFES Truck Crops Branch in Crystal Springs, MS (USDA Zone 8b). Cultivars representing major commercial breeders were trialed in sun and shade, in both in-ground and containerized plantings. Plants were established from seed, rooted plugs, or finished containers and grown under standard production practices. Performance was assessed semimonthly using a 1 to 5 rating scale based on flower coverage, foliage health, and landscape impact, and consumer preference was measured during a public evaluation event.

Weather conditions during the 2025 trial were typical for the region, with high spring rainfall but no extreme events. Overall, 65.2% of entries scored ≥ 3.00 , and 22.1% achieved exceptional scores of ≥ 4.00 . Top-performing annuals included *Coleus* 'ColorBlaze® Royale Pineapple Brandy™' and *Ipomoea* 'Sweet Caroline Medusa™

Green' (both 4.94), while leading flowering annuals included *Catharanthus* 'Pacifica XP Pink' (4.65) and *Cleome* 'Señorita Rosalita®' (4.57). Among containerized entries, *Impatiens* 'Beacon®' cultivars were the highest scoring (≥ 4.5). Shade annuals, particularly the *Begonia* 'Surefire®' series, consistently performed well, all scoring ≥ 4.00 . Of the 114 perennials evaluated, eighteen scored ≥ 4.00 , led by *Cuphea* 'Vermillionaire®' (4.80), *Buddleia* 'Chrysalis™ Pink' (4.59), and *Coreopsis* 'UpTick™ Gold' (4.56). Only one shade perennial, *Ordernia* 'Fusion of Fire', achieved an exceptional score (4.00). Consumer preference voting (160 total votes) identified *Monarda* 'BeeMine™ Purple,' *Hibiscus* 'Head Over Heels® Adore™,' and *Buddleia* 'Chrysalis™ Pink' as the most favored cultivars.

These results highlight numerous cultivars with strong heat, humidity, and weather tolerance suitable for Mississippi landscapes. The data generated from this regional trial provide valuable guidance to growers, landscapers, breeders, and consumers regarding high-performing ornamental plants for the southeastern United States.

INTRODUCTION

New cultivars are introduced into the horticultural market each year. They often contain unique characteristics such as earlier or extended flowering, new colors, better disease resistance, or altered plant architecture. While new cultivars entering the market have undergone testing in other regions, their performance has not been evaluated in this region. Environmental conditions play a major role in plant performance. Central Mississippi can pose challenges in spring and summer to plant performance due to hot temperatures (both day and night), high humidity,

heavy rainfall, summer drought, and severe storms. Cultivars that perform well in these conditions often have great disease resistance, an ability to adapt to moisture extremes, and tolerance to extended periods of heat and humidity. Regional trials provide helpful data to producers and plant breeders and introduce the public to new plants that perform well in their state. This spring and summer ornamental trial evaluates the performance of various bedding and garden plants in central Mississippi.

MATERIALS AND METHODS

The ornamental trial of 181 cultivars was conducted at the MAFES Truck Crops Branch in Crystal Springs (USDA Zone 8b). All entries from Ball FloraPlant®, Darwin Perennials®, Proven Winners®, Selecta One, and Walter's Gardens were supplied as rooted plugs or finished containers. Entries from PanAmerican Seed® and Kieft Seed were supplied as seed. Entries were assigned to be trialed in sun, shade as well as in-ground or container. Seven entries were trialed under different conditions. Sowing dates were cultivar-specific. Seeds were sown in 72-cell plug trays filled with soilless medium (Pro-Mix BX; Premier Tech, Ltd.). The sowing dates were based on recommended production timelines. Plants requiring longer production were sown in January, while other entries with short production were sown in March. In April, the containerized trial entries were transplanted into 30-cm hanging baskets or 30-cm containers filled with soilless growing medium (Pro-Mix BX; Premier Tech, Ltd.) and grown according to industry recommendations. The annuals and perennials were planted on April 4 in 20-cm-tall, raised boxes filled with native soil. Irrigation was supplied through drip tape as needed. No herbicides were applied; weeds were pulled manually. Pesticides were used sparingly on an as-needed basis, such as for fire ant control.

Semimonthly ratings were based on a 1-5 scale, with 5 representing the best rating. Criteria for the ratings included flower coverage, leaf health, and landscape impact. Ratings correlated with percentages. For example, a flower coverage rating of 5 indicates that at least 90% of the plant's terminal buds were in flower. A leaf health rating of 5 would indicate that at least 90% of the foliage is free of disease symptoms. Ratings were based on trial criteria per cultivar and not comparisons between cultivars (Table 1). Local weather data were collected during the trial (Figure 1).

On June 21, 2025, 54 participants were each provided with three utility flags and asked to select plants they would consider purchasing if available. Flags were tallied after the event to identify those with the most votes.

Table 1. Planting trial rating scale

Score	Description
5	Excellent - 90%+
4	Good - 75%+
3	Fair - 50+
2	Poor - 25%+
1	Unacceptable - <25%



RESULTS AND DISCUSSION

Weather During Trial

Weather conditions in 2025 were typical for this region. Daily high and low temperatures were more variable in spring than in summer. Monthly rainfall totals were also consistent with precipitation norms, except for May, which received approximately twice the normal amount. Total precipitation on any given day did not exceed 3 inches.

	Observed	Normal
April	5.32	5.73
May	8.42	4.42
June	5.12	5.57
July	3.86	5.39
August	5.5	5.76

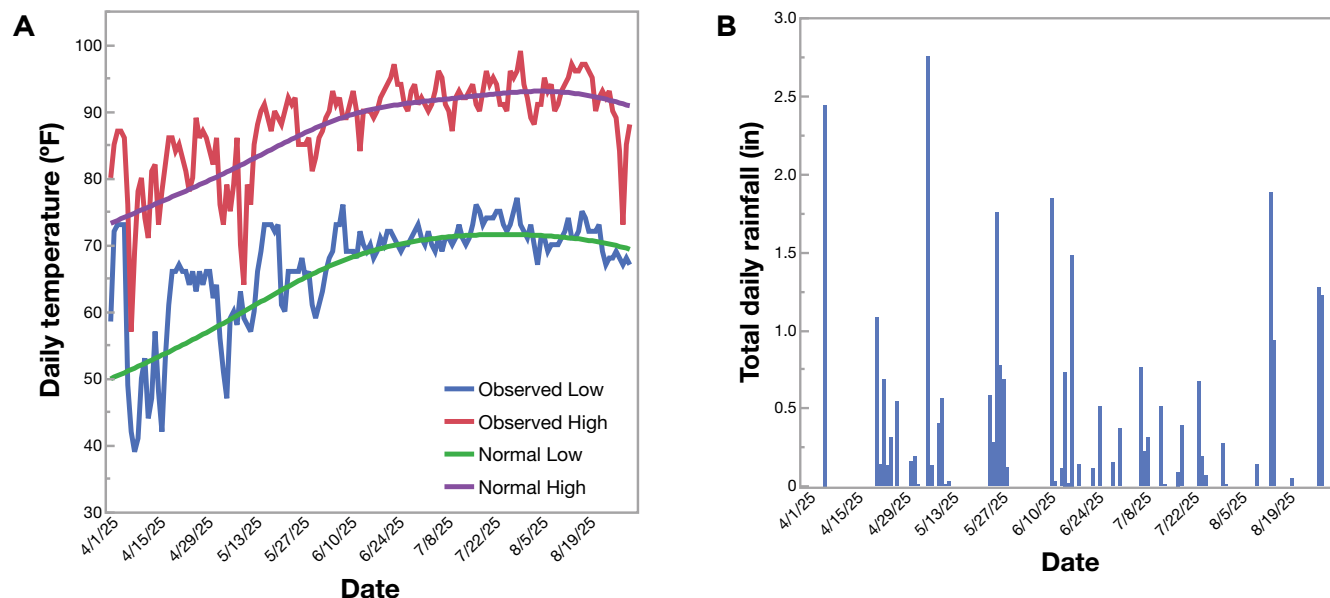


Figure 1. Local weather data during the trial: (A) Daily high (red) and low (blue) temperatures and (B) total daily precipitation.

Overall Trial Garden Entry Performance

Most entries (118; 65.2%) responded well to the local weather conditions and received a score of 3.00 or higher, and 40 entries (22.1%) received a score of at least 4.00. Highlighted below are top-performing

cultivars from specific categories that received a score of 4.00 or more (Table 3). A full list of performance ratings for the evaluation criteria was also included (Table 4).

Table 3. Top-performing trial garden entries for 2025.

Type	Rank	Cultivar	Company	Overall Score
sun annual	1	<i>Coleus</i> 'ColorBlaze® Royale Pineapple Brandy™'	Proven Winners	4.94
sun annual	2	<i>Ipomoea</i> 'Sweet Caroline Medusa™ Green'	Proven Winners	4.94
sun perennial Y2	3	<i>Cuphea</i> 'Vermillionaire®'	Proven Winners	4.80
sun annual	4	<i>Coleus</i> 'ColorBlaze® Wicked Witch™'	Proven Winners	4.72
sun annual	5	<i>Catharanthus</i> 'Pacifica XP Pink'	PanAmerican Seed	4.65
sun annual	6	<i>Catharanthus</i> 'Pacifica XP Red Halo'	PanAmerican Seed	4.63

RESULTS AND DISCUSSION

Table 3. Top-performing trial garden entries for 2025 (continued).

Type	Rank	Cultivar	Company	Overall Score
shade container	7	<i>Impatiens</i> 'Beacon® Light Pink'	PanAmerican Seed	4.63
sun perennial Y2	8	<i>Buddleia</i> 'Chrysalis™ Pink'	Darwin Perennials	4.59
sun annual	9	<i>Cleome</i> 'Señorita Rosalita®'	Proven Winners	4.57
sun perennial Y1	10	<i>Coreopsis</i> 'UpTick® Gold'	Darwin Perennials	4.56
sun annual	11	<i>Scaevola</i> 'Stardiva® Blue'	Proven Winners	4.56
sun annual	12	<i>Scaevola</i> 'Whirlwind® White' (imp)	Proven Winners	4.56
sun perennial Y1	13	<i>Agastache</i> 'Summerlong™ Lilac'	Darwin Perennials	4.54
shade container	14	<i>Impatiens</i> 'Beacon® Blue Pearl'	PanAmerican Seed	4.52
sun annual	15	<i>Helianthus</i> 'Suncredible® Yellow'	Proven Winners	4.50
sun perennial Y1	16	<i>Agastache</i> 'Summerlong™ Magenta'	Darwin Perennials	4.46
sun perennial Y1	17	<i>Oenothera</i> 'Superlophus™ Sunglow'	Proven Winners	4.46
sun perennial Y1	18	<i>Miscanthus</i> 'High Frequency™'	Darwin Perennials	4.42
sun perennial Y1	19	<i>Monarda</i> 'BeeMine™ Purple'	Darwin Perennials	4.37
sun perennial Y1	20	<i>Rudbeckia</i> 'Suntacular'	Darwin Perennials	4.35
sun perennial Y1	21	<i>Lantana</i> 'Shamrock™ Lavender'	Ball FloraPlant	4.30
sun perennial Y2	22	<i>Achillea</i> 'New Vintage™ Terracotta'	Darwin Perennials	4.26
sun perennial Y1	23	<i>Agastache</i> 'Summerlong™ Coral'	Darwin Perennials	4.26
sun annual	24	<i>Bidens</i> 'Campfire® Marshmallow™'	Proven Winners	4.26
shade annual	25	<i>Begonia</i> 'Surefire® White'	Proven Winners	4.24
shade annual	26	<i>Begonia</i> 'Surefire® Red'	Proven Winners	4.22
sun annual	27	<i>Coleus</i> 'ColorBlaze® El Brighto'	Proven Winners	4.22
sun basket	28	<i>Portulaca</i> 'RioGrande™ Citrus Crush'	Ball FloraPlant	4.22
sun perennial Y3	29	<i>Lagerstroemia</i> 'Barista® 'Cherry Mocha'	Walter's Gardens	4.20
sun perennial Y1	30	<i>Lantana</i> 'Luscious® Basket Tange glow™'	Proven Winners	4.20
sun basket	31	<i>Portulaca</i> 'RioGrande™ Raspberry Lemonade'	Ball FloraPlant	4.20
shade annual	32	<i>Begonia</i> 'Surefire® Rose'	Proven Winners	4.19
sun annual	33	<i>Petunia</i> 'Supertunia Vista® Bubblegum®'	Proven Winners	4.18
sun annual	34	<i>Agastache</i> 'Maestro™ Gold'	Proven Winners	4.17
shade annual	35	<i>Begonia</i> 'Surefire® Cascade™ Red'	Proven Winners	4.15
shade annual	36	<i>Impatiens</i> 'Beacon® Blue Pearl'	PanAmerican Seed	4.13
sun perennial Y1	37	<i>Heliopsis</i> 'Sundial'	Walter's Gardens	4.11
sun perennial Y2	38	<i>Achillea</i> 'Firefly Fuchsia'	Walter's Gardens/Proven Winners	4.07
sun perennial Y1	39	<i>Rudbeckia</i> 'Treasure Trove'	Proven Winners	4.06
sun annual	40	<i>Petunia</i> 'Supertunia Mini Vista® Pink Cloud®'	Proven Winners	4.02
shade annual	41	<i>Impatiens</i> 'Beacon® Light Pink'	PanAmerican Seed	4.00
shade perennial Y3	42	<i>Orderia</i> 'Fusion of Fire'	Walter's Gardens	4.00

RESULTS AND DISCUSSION

Top Consumer Preference Trial Picks

A total of 160 votes were cast. The following entries received at least five votes, making them the entries with the highest vote share: *Monarda* 'BeeMine™ Purple' (14.4% of the total votes), *Hibiscus* 'Head Over Heels® Adore™' (8.8%), *Buddleia* 'Chrysalis™ Pink' (6.9%), *Cuphea* 'Vermillionaire®' (6.3%), *Lobelia* 'Laguna® Royale Blue Pearl' (6.3%), *Helianthus* 'Suncredible® Yellow' (4.4%), *Dahlia* 'Venti™ FireBurst' (3.8%), *Scaevola*

'Whirlwind® White' (3.8%), *Cleome* Señorita Rosalita® (3.1%), *Hemerocallis* Rainbow Rhythm® 'Blazing Glory' (3.1%), *Hibiscus* Summerific® 'All Eyes On Me' (3.1%), *Hibiscus* Summerific® 'Garnet Globes' (3.1%), and *Portulaca* 'RiogGrande™ Raspberry Lemonade' (3.1%). Seven of these entries performed exceptionally well throughout the season and had an overall score above a 4.00.

In-Ground Annuals

Of the 41 in-ground annual entries, 12 had a score of 4.00 or higher. Several annuals grown primarily for colorful foliage performed well. Specifically, the ColorBlaze® *Coleus* series performed well in the trial with colors 'Royale Pineapple Brandy™' (overall score 4.94), 'Wicked Witch™' (4.72), and 'El Brighto' (4.22).

'El Brighto' was the first *Coleus* to flower in the trial, with buds present on May 30. *Ipomoea* 'Sweet Caroline Medusa™ Green' performed very well with an overall score of 4.94 (Figure 2).



Figure 2. Top-performing in-ground foliage annuals. (A) *Coleus* ColorBlaze® 'Royale Pineapple Brandy™'; photo taken 05/16/2025, overall score 4.94; (B) *Ipomoea* 'Sweet Caroline Medusa™ Green,' 05/16/2025, 4.94; (C) *Coleus* ColorBlaze® 'Wicked Witch™'; 5/16/2025, 4.72; (D) *Coleus* ColorBlaze® 'El Brighto,' 05/16/2025, 4.22.

RESULTS AND DISCUSSION

Several annual entries grown primarily for flowers also performed well. *Catharanthus* ‘Pacifica XP Pink’ and ‘Pacifica XP Red Halo’ were the top performing annual flowering entries, receiving scores of 4.65 and 4.63, respectively. *Cleome* Señorita Rosalita® has been in previous years’ trials, and it continued to perform well this season with a score of 4.57. *Scaevola* also performed well and flowered well through summer: ‘Stardiva® Blue’ and ‘Whirlwind® White’ (imp) both had a score of 4.56. *Helianthus* ‘Suncredible® Yellow’ received

a score 4.50 and bloomed continuously throughout the trial. *Bidens* ‘Campfire® Marshmallow™’ continued to be one of the most impressive *Bidens*, especially due to its heat tolerance. It received a score of 4.26. Two *Petunias* scored above a 4.00. They included ‘Supertunia Vista® Bubblegum®’ (4.18), and ‘Supertunia Mini Vista® Pink Cloud®’ (4.02). Finally, *Agastache* ‘Maestro® Gold’ received a score of 4.17. It is rated at a USDA plant hardiness of 8b, so it may survive the winter in the lower portion of the state.



Figure 3. Top-performing in-ground flowering annuals (A) *Catharanthus* ‘Pacifica XP Pink,’ photo taken 06/27/2025, overall score 4.65; (B) *Catharanthus* ‘Pacifica XP Red Halo,’ 06/13/2025, 4.63; (C) *Cleome* ‘Señorita Rosalita,’ 06/13/2025, 4.57; (D) *Scaevola* ‘Stardiva® Blue,’ 06/10/2025, 4.56; (E) *Scaevola* ‘Whirlwind® White’ (improved), 06/10/2025, 4.56; (F) *Helianthus* ‘Suncredible® Yellow,’ 06/23/2025, 4.50; (G) *Bidens* ‘Campfire® Marshmallow™,’ 06/10/2025, 4.26; (H) *Petunia* ‘Supertunia Vista® Bubblegum®,’ 06/10/2025, 4.18; (I) *Petunia* ‘Supertunia Mini Vista® Pink Cloud®,’ 06/10/2025, 4.02.

RESULTS AND DISCUSSION

Containerized Plant Entries

Generally, the 26 containerized plants performed well this year, with all but three receiving a score of 3.00 or above. Several received a score above 4.00. The Beacon® series *Impatiens*, featuring colors 'Light Pink' and 'Blue Pearl,' was the best-performing in this

category, receiving an average rating above 4.5. Other top-performing containerized plants included the RioGrande™ series, *Portulaca* 'Citrus Crush' (4.22), and 'Raspberry Lemonade' (4.20) (Figure 4).



Figure 4. Top-performing containerized plants (A) *Impatiens* Beacon® 'Light Pink,' photo taken 06/13/2025, overall score 4.63; (B) *Impatiens* Beacon® 'Blue Pearl,' 06/13/2025, 4.52; (C) *Portulaca* RioGrande™ 'Citrus Crush,' 06/13/2025, 4.22; (D) *Portulaca* RioGrande™ 'Raspberry Lemonade,' 06/13/2025, 4.20.

RESULTS AND DISCUSSION

Shade Annuals

Each of the shade annual entries performed exceptionally well and received a score of at least 4.00. The Surefire® *Begonia* series had great performance and included the colors White (4.33), Red (4.22), Rose (4.19), and Cascade Red 4.15. We also trialed Beacon® series *Impatiens* colors 'Blue Pearl' and 'Light Pink' in the ground, and they received a score of 4.22 and 4.00 (Figure 5).



Figure 5. Top-performing in-ground shade annuals (A) *Begonia* 'Surefire® White,' photo taken 06/27/2025, overall score 4.24; (B) *Begonia* 'Surefire® Red,' 06/13/2025, 4.22; (C) *Begonia* 'Surefire® Rose,' 06/13/2025, 4.19; (D) *Begonia* 'Surefire® Cascade Red,' 06/13/2025, 4.15; (E) *Impatiens* Beacon® 'Blue Pearl,' 06/13/2025, 4.13; (F) *Impatiens* Beacon® 'Light Pink,' 06/13/2025, 4.00.

RESULTS AND DISCUSSION

Perennials

This year's trial contained 114 perennials. Of those, 63 earned a score of 3.00 or above and 18 earned an exceptional score of 4.00 or above. The top-ten performing perennials included *Cuphea* 'Vermillionaire®' (with an overall score of 4.80), *Buddleia* 'Chrysalis™ Pink' (4.59), *Coreopsis* 'UpTick™ Gold' (4.56), *Agastache*

'Summerlong™ Lilac' (4.54), *Oenothera* 'Superlophus™ Sunglow' (4.46), *Agastache* 'Summerlong™ Magenta' (4.28), *Miscanthus* 'High Frequency™' (4.42), *Monarda* 'BeeMine™ Purple' (4.37), *Rudbeckia* 'Suntacular' (4.35), and *Lantana* 'Shamrock™ Lavender' (4.30) (Figure 6).



Figure 6. Top-10 performing perennials. (A) *Cuphea* 'Vermillionaire®,' photo taken 06/13/2025, overall score 4.80; (B) *Buddleia* 'Chrysalis™ Pink,' 06/27/2025, 4.59; (C) *Coreopsis* 'UpTick™ Gold,' 05/16/2025, 4.56; (D) *Agastache* 'Summerlong™ Lilac,' 05/16/2025, 4.54; (E) *Oenothera* 'Superlophus™ Sunglow,' 05/16/2025, 4.46; (F) *Agastache* 'Summerlong™ Magenta,' 06/13/2025, 4.46; (G) *Miscanthus* 'High Frequency™,' 07/9/2025, 4.42; (H) *Monarda* 'BeeMine™ Purple,' 06/13/2025, 4.37; (I) *Rudbeckia* 'Suntacular,' 6/27/2025, 4.35; (J) *Lantana* 'Shamrock™ Lavender,' 06/13/2025, 4.30.

RESULTS AND DISCUSSION

Shade Perennials

We trialed nine shade perennials entries, but only one received an exceptional score: *Ordenia* 'Fusion of Fire', with an overall score of 4.0 (Figure 7). This early blooming perennial would work well in place of Heuchera.



Figure 7. Top shade perennial. *Ordenia* 'Fusion of Fire.' Photo taken 03/27/2025, overall score 4.0.

RESULTS AND DISCUSSION

Table 4. Average criteria scoring for all 2025 trial entries.

Cultivar	Type	Flower	Leaf	Impact	Overall Average
<i>Coleus</i> 'ColorBlaze® Royale Pineapple Brandy™'	sun annual	N/A	5.00	4.89	4.94
<i>Ipomoea</i> 'Sweet Caroline Medusa™ Green'	sun annual	N/A	5.00	4.89	4.94
<i>Cuphea</i> 'Vermillionaire®'	sun perennial Y2	4.78	5.00	4.61	4.80
<i>Coleus</i> 'ColorBlaze® Wicked Witch™'	sun annual	4.00	5.00	4.89	4.72
<i>Catharanthus</i> 'Pacifica XP Pink'	sun annual	4.44	5.00	4.50	4.65
<i>Catharanthus</i> 'Pacifica XP Red Halo'	sun annual	4.56	4.78	4.56	4.63
<i>Impatiens</i> 'Beacon® Light Pink'	shade container	4.61	4.67	4.61	4.63
<i>Buddleia</i> 'Chrysalis™ Pink'	sun perennial Y2	4.38	5.00	4.44	4.59
<i>Cleome</i> 'Señorita Rosalita®'	sun annual	4.89	4.11	4.72	4.57
<i>Coreopsis</i> 'UpTick® Gold'	sun perennial Y1	4.39	4.78	4.50	4.56
<i>Scaevola</i> 'Stardiva® Blue'	sun annual	4.56	4.78	4.33	4.56
<i>Scaevola</i> 'Whirlwind® White' (Imp.)	sun annual	4.44	4.78	4.44	4.56
<i>Agastache</i> 'Summerlong™ Lilac'	sun perennial Y1	4.78	4.44	4.39	4.54
<i>Impatiens</i> 'Beacon® Blue Pearl'	shade container	4.50	4.56	4.50	4.52
<i>Helianthus</i> 'Suncredible® Yellow'	sun annual	3.94	5.00	4.56	4.50
<i>Agastache</i> 'Summerlong™ Magenta'	sun perennial Y1	4.67	4.44	4.28	4.46
<i>Oenothera</i> 'Superlophus™ Sunglow'	sun perennial Y1	4.33	4.78	4.28	4.46
<i>Miscanthus</i> 'High Frequency™'	sun perennial Y1	2.00	4.89	4.17	4.42
<i>Monarda</i> 'BeeMine™ Purple'	sun perennial Y1	3.88	5.00	4.22	4.37
<i>Rudbeckia</i> 'Suntacular'	sun perennial Y1	3.94	4.89	4.22	4.35
<i>Lantana</i> 'Shamrock™ Lavender'	sun perennial Y1	4.00	4.89	4.00	4.30
<i>Achillea</i> 'New Vintage™ Terracotta'	sun perennial Y2	4.38	4.28	4.17	4.26
<i>Agastache</i> 'Summerlong™ Coral'	sun perennial Y1	4.44	4.44	3.89	4.26
<i>Bidens</i> 'Campfire® Marshmallow™'	sun annual	4.56	4.00	4.22	4.26
<i>Begonia</i> 'Surefire® White'	shade annual	4.33	4.17	4.22	4.24
<i>Begonia</i> 'Surefire® Red'	shade annual	4.22	4.22	4.22	4.22
<i>Coleus</i> 'ColorBlaze® El Brighto'	sun annual	1.67	5.00	4.89	4.22
<i>Portulaca</i> 'RioGrande™ Citrus Crush'	sun basket	4.75	4.22	4.00	4.22
<i>Lagerstroemia</i> 'Barista® Cherry Mocha'	sun perennial Y3	3.00	4.50	4.44	4.20
<i>Lantana</i> 'Luscious® Basket Tange glow™'	sun perennial Y1	3.83	4.89	3.89	4.20
<i>Portulaca</i> 'RioGrande™ Raspberry Lemonade'	sun basket	4.28	4.22	4.11	4.20
<i>Begonia</i> 'Surefire® Rose'	shade annual	4.22	4.22	4.11	4.19
<i>Petunia</i> 'Supertunia Vista® Bubblegum®'	sun annual	4.17	4.31	4.06	4.18

RESULTS AND DISCUSSION

Table 4. Average criteria scoring for all 2025 trial entries (continued).

Cultivar	Type	Flower	Leaf	Impact	Overall Average
<i>Agastache</i> 'Maestro™ Gold'	sun annual	4.25	4.67	3.67	4.17
<i>Begonia</i> 'Surefire Cascade® Red'	shade annual	4.11	4.28	4.06	4.15
<i>Impatiens</i> 'Beacon® Blue Pearl'	shade annual	4.22	4.11	4.06	4.13
<i>Heliopsis</i> 'Sundial'	sun perennial Y1	4.11	4.11	4.11	4.11
<i>Achillea</i> 'Firefly Fuchsia'	sun perennial Y2	4.07	4.56	3.89	4.07
<i>Rudbeckia</i> 'Treasure Trove'	sun perennial Y1	4.11	4.17	3.89	4.06
<i>Petunia</i> 'Supertunia Mini Vista® Pink Cloud®'	sun annual	4.44	3.83	3.78	4.02
<i>Impatiens</i> 'Beacon® Light Pink'	shade annual	4.00	4.00	4.00	4.00
<i>Ordenia</i> 'Fusion of Fire'	shade perennial Y3	N/A	4.44	3.56	4.00
<i>Hibiscus</i> 'Head Over Heels® Adore™'	sun perennial Y3	3.60	4.44	3.78	3.96
<i>Agastache</i> 'Maestro™ Coral'	sun annual	4.17	4.56	3.11	3.94
<i>Veronica</i> 'Skyward™ Lilac'	sun perennial Y2	3.33	4.89	3.61	3.94
<i>Agastache</i> 'Summerlong™ Lemon'	sun perennial Y1	3.81	4.39	3.67	3.93
<i>Baptisia</i> 'Grape Escape'	sun perennial Y3	2.00	5.00	3.00	3.93
<i>Lantana</i> 'Luscious® Royale Red Zone™'	sun perennial Y1	3.33	4.89	3.56	3.93
<i>Calibrachoa</i> 'Superbells® Double Smitten Pink'	sun basket	4.00	3.89	3.83	3.91
<i>Achillea</i> 'New Vintage™ Violet'	sun perennial Y2	3.44	4.44	3.78	3.89
<i>Lagerstroemia</i> 'Barista® Sweet Macciato™'	sun perennial Y3	2.86	4.22	4.11	3.89
<i>Rosmarinus</i> 'Blue Cascade'	sun perennial Y1	2.00	4.89	3.22	3.87
Mixmaster 'Poppin Primaries'	sun basket	4.33	3.50	3.72	3.85
<i>Coreopsis</i> 'Sunfetti'	sun perennial Y1	3.50	4.44	3.56	3.83
<i>Lagerstroemia</i> 'Barista® Like a Latte™'	sun perennial Y3	3.00	4.17	4.00	3.83
<i>Pelargonium</i> 'Moonlight Purple Big Eye'	sun basket	3.78	4.00	3.72	3.83
<i>Zinnia</i> 'Elegant Mix Hot'	sun annual	3.89	3.89	3.72	3.83
<i>Caryopteris</i> 'Gold Crest'	sun perennial Y3	2.33	3.78	4.22	3.80
<i>Yucca</i> 'Dragon Slayer'	sun perennial Y1	N/A	4.22	3.33	3.78
<i>Hibiscus</i> 'Summerific® All Eyes on Me'	sun perennial Y3	2.83	4.67	3.44	3.76
<i>Pentas</i> 'Lucky Star Violet Improved'	sun annual	3.75	4.00	3.56	3.74
<i>Calibrachoa</i> 'MiniFamous Neo Rose Flash'	sun basket	3.78	3.78	3.50	3.69
<i>Lobelia</i> 'Laguna® Royale Azure'	sun annual	3.81	3.81	3.44	3.69
<i>Petunia</i> 'Supertunia Mini Vista® Yellow'	sun annual	4.00	3.72	3.33	3.69
<i>Scaevola</i> 'Stardiva® Pink'	sun annual	3.83	3.56	3.61	3.67
<i>Heliopsis</i> 'Rays for Days'	sun perennial Y1	3.61	3.72	3.61	3.65

RESULTS AND DISCUSSION

Table 4. Average criteria scoring for all 2025 trial entries (continued).

Cultivar	Type	Flower	Leaf	Impact	Overall Average
<i>Centaurea</i> 'Silver Swirl'	sun perennial Y1	N/A	3.75	3.61	3.64
<i>Hemerocallis</i> 'Rainbow Rhythm® Blazing Glory'	sun perennial Y3	3.38	4.11	3.33	3.61
<i>Coreopsis</i> 'UpTick™ Gold'	sun perennial Y2	3.19	3.97	3.50	3.56
<i>Veronica</i> 'Moody Blues® Dark Blue Improved'	sun perennial Y3	2.61	4.67	3.33	3.54
<i>Lantana</i> 'Lucky™ Gold'	sun perennial Y2	3.38	4.00	3.36	3.52
<i>Lantana</i> 'PassionFruit'	sun perennial Y2	3.50	3.67	3.36	3.51
<i>Angelonia</i> 'Archangel Fuchsia'	sun annual	2.72	4.67	3.11	3.50
<i>Brunnera</i> 'Frost King'	shade perennial Y1	1.00	3.40	3.60	3.50
<i>Echinacea</i> 'Sombrero® Adobe Orange'	sun perennial Y3	3.61	3.67	3.22	3.50
Trixi® 'Savoring Starfruit'	sun basket	3.56	3.67	3.28	3.50
<i>Gaillardia</i> 'Guapa Red'	sun perennial Y1	3.22	4.00	3.22	3.48
<i>Hibiscus</i> 'Marshmallow Moon'	sun perennial Y3	2.50	4.50	3.33	3.48
<i>Petunia</i> 'Supertunia Vista® Cool Jazz™'	sun annual	3.39	3.75	3.28	3.47
<i>Calibrachoa</i> 'Superbells Magic® Double Grapefruit'	sun basket	3.00	4.11	3.28	3.46
<i>Hibiscus</i> 'Summerific Garnet Globes'	sun basket	3.00	4.11	3.28	3.46
<i>Salvia</i> 'Unplugged® White'	sun perennial Y1	2.50	4.44	3.28	3.46
<i>Veronica</i> 'Moody Blues® Dark Pink'	sun perennial Y2	2.94	3.78	3.56	3.43
<i>Petunia</i> 'Slingshot Purple Fantasy'	sun perennial Y3	2.78	4.22	3.22	3.41
<i>Verbena</i> 'Superbena® Pink Cashmere™'	sun basket	3.56	3.28	3.33	3.39
<i>Petunia</i> 'Headliner Crystal Pink'	sun perennial Y3	2.89	3.94	3.28	3.37
<i>Petunia</i> 'Supertunia Hoopla Vivid Orchid'	sun basket	3.56	3.22	3.28	3.35
<i>Spigelia</i> 'Apple Slices'	shade perennial Y1	2.25	4.44	3.00	3.35
<i>Calibrachoa</i> 'Superbells® Double Vintage Coral'	sun annual	3.56	3.22	3.28	3.35
<i>Achillea</i> 'Firefly Red Pop'	sun perennial Y2	3.40	3.78	2.78	3.32
<i>Gaillardia</i> 'Guapa Flamenco Bicolor'	sun perennial Y1	2.73	4.17	3.06	3.32
<i>Calibrachoa</i> 'MiniFamous Neo Coral Flash'	sun basket	3.61	3.22	3.11	3.31
<i>Delosperma</i> 'Ocean Sunset™ Violet Flare'	sun perennial Y2	3.44	3.44	3.00	3.30
<i>Pelargonium</i> 'Moonlight Dark Red'	sun basket	3.31	3.67	2.89	3.29
<i>Jamesbrittenia</i> 'Safari® Dawn'	sun basket	3.11	3.61	3.11	3.28
<i>Eucomis</i> 'Crowning Glory™ Purple Reign'	sun perennial Y3	5.00	3.50	2.78	3.27
<i>Lobelia</i> 'Laguna® Royale Pink'	sun perennial Y3	2.56	3.67	3.56	3.26
<i>Nepeta</i> 'Chartreuse on the Loose'	sun annual	3.50	3.17	3.11	3.26
<i>Pelargonium</i> 'Solera Dark Red'	sun basket	3.17	3.56	3.06	3.26

RESULTS AND DISCUSSION

Table 4. Average criteria scoring for all 2025 trial entries (continued)

Cultivar	Type	Flower	Leaf	Impact	Overall Average
<i>Agastache</i> 'Summerlong™ Peach'	sun perennial Y3	2.67	3.78	3.28	3.24
<i>Verbena</i> 'Superbena® Sparkling® Amethyst'	sun perennial Y1	3.33	3.50	2.89	3.24
Trixi® 'FunTopia Utopia'	sun basket	3.25	3.44	3.00	3.20
<i>Petunia</i> 'Headliner™ Strawberry Picotee'	sun basket	3.33	3.17	3.06	3.19
<i>Bidens</i> 'Campfire® Red Ember'	sun basket	3.11	3.28	3.11	3.17
<i>Jamesbrittenia</i> 'Safari® Lava Flow'	sun annual	3.33	3.17	3.00	3.17
<i>Lobularia</i> 'White Knight' (Imp.)	sun annual	3.22	3.33	2.94	3.17
<i>Petunia</i> 'Supertunia Vista® Jazzberry®'	sun annual	3.44	3.00	3.00	3.15
<i>Spigelia</i> 'Orange Slices'	sun perennial Y1	3.00	3.78	2.67	3.15
<i>Hemerocallis</i> 'DayScape Golden Yellow'	sun perennial Y1	2.00	3.67	2.94	3.12
<i>Phlox</i> 'Southern Blaze™ Bright Pink'	sun annual	3.22	3.06	3.06	3.11
<i>Phlox</i> 'Southern Blaze™ White'	sun annual	3.56	2.67	3.11	3.11
<i>Penstemon</i> 'Summit Sweets Ruby'	sun perennial Y1	2.79	3.44	3.00	3.09
<i>Echinacea</i> 'Double Scoop™ Raspberry Deluxe'	sun perennial Y3	3.25	3.33	2.72	3.07
<i>Artemisia</i> 'Silver Lining'	sun perennial Y3	N/A	2.94	3.17	3.06
<i>Penstemon</i> 'Quartz Red'	sun perennial Y1	2.50	3.61	3.00	3.06
<i>Calibrachoa</i> 'MiniFamous Neo Magenta Star'	sun basket	2.61	3.78	2.72	3.04
<i>Stokesia</i> 'Totally Stoked™ Riptide'	sun perennial Y2	2.64	3.39	3.11	3.04
<i>Lantana</i> 'Shamrock™ Rose Gold'	sun perennial Y3	2.60	3.89	2.50	3.03
<i>Jamesbrittenia</i> 'Safari® Dusk™'	sun basket	2.67	3.28	3.11	3.02
<i>Phlox</i> 'Southern Blaze™ Red Hot'	sun annual	3.44	2.56	3.06	3.02
<i>Lantana</i> 'Shamrock™ Lavender'	sun basket	3.33	3.33	2.89	3.00
<i>Spigelia</i> 'Apple Slices'	sun perennial Y1	2.50	3.67	2.56	3.00
<i>Heuchera</i> 'Carnival Lime Zest'	shade perennial Y1	N/A	2.86	3.11	2.99
<i>Verbena</i> 'EnduraScape™ Purple Fizz'	sun perennial Y3	2.63	3.83	2.50	2.97
<i>Brunnera</i> 'Frost Magic'	shade perennial Y1	1.00	2.80	3.20	2.93
<i>Dahlia</i> 'Venti FireBurst'	sun annual	2.78	3.00	2.89	2.89
<i>Nepeta</i> 'Lemon Purrfection'	sun perennial Y1	2.43	3.11	3.11	2.89
<i>Lobelia</i> 'Laguna® Royale Blue Pearl'	sun annual	3.03	2.86	2.72	2.87
<i>Petunia</i> 'Easy Wave Pink Pearl'	sun basket	3.06	2.72	2.83	2.87
<i>Agastache</i> 'Summerlong™ Lemon'	sun perennial Y2	2.92	3.11	2.56	2.86
<i>Petunia</i> 'SlingShot Cherry Tartwheel'	sun basket	2.94	2.94	2.67	2.85
<i>Penstemon</i> 'Mountain Treats Rose'	sun perennial Y1	2.31	3.44	2.78	2.83

RESULTS AND DISCUSSION

Table 4. Average criteria scoring for all 2025 trial entries (continued).

Cultivar	Type	Flower	Leaf	Impact	Overall Average
<i>Dahlia</i> 'Venti™ PinkBurst'	sun perennial Y1	2.56	3.00	2.89	2.81
<i>Nepeta</i> 'Catwalk Queen'	shade perennial Y1	3.00	3.39	2.39	2.81
<i>Spigelia</i> 'Orange Slices'	sun basket	2.61	3.00	2.83	2.81
Trixi® 'Swirling Shuffle'	sun annual	2.83	3.00	2.61	2.81
<i>Vernonia</i> 'Prairie Princess'	sun perennial Y1	4.00	3.17	2.39	2.80
<i>Heliotropium</i> 'Aromagica® Purple'	sun annual	2.83	3.08	2.72	2.79
<i>Lantana</i> 'Shamrock™ Red'	sun perennial Y3	1.83	3.67	2.50	2.78
<i>Penstemon</i> 'Summit Sweets™ Purple'	sun perennial Y1	N/A	2.89	2.67	2.78
<i>Tecoma</i> 'Kalama™ Pomegranate'	sun perennial Y2	1.75	3.17	2.56	2.77
<i>Echinacea</i> 'Double Scoop™ Watermelon Deluxe'	sun perennial Y3	3.13	3.11	2.17	2.75
<i>Petunia</i> 'Shock Wave® Violet'	sun annual	2.78	3.00	2.44	2.74
<i>Penstemon</i> 'Mountain Treats™ Lavender'	sun perennial Y1	1.88	3.33	2.83	2.72
<i>Hibiscus</i> 'Head Over Heels® Blush'	sun perennial Y3	2.08	3.00	2.39	2.70
<i>Phlox</i> 'Luminary® 'Prismatic Pink'	sun perennial Y3	3.14	2.56	2.67	2.70
<i>Dicentra</i> 'Passion Hearts'	sun perennial Y1	3.25	2.67	2.50	2.65
<i>Penstemon</i> 'Mountain Treats™ Light Pink'	sun perennial Y1	2.14	2.94	2.72	2.63
<i>Delosperma</i> 'Kaleidoscope™ Dancing Embers'	sun perennial Y2	2.00	3.33	2.28	2.62
<i>Petunia</i> 'Shock Wave® Rose Vein'	sun annual	2.67	2.75	2.44	2.62
<i>Penstemon</i> 'Mountain Treats™ Purple'	sun perennial Y1	2.00	2.94	2.72	2.61
<i>Salvia</i> 'Blue by You'	sun perennial Y2	2.00	3.44	2.39	2.61
<i>Geranium</i> 'Purple Glow'	sun perennial Y1	1.67	3.11	2.67	2.56
<i>Penstemon</i> 'Rock Candy® Coral'	sun perennial Y1	2.38	2.61	2.61	2.52
<i>Brunnera</i> 'Frostbite'	shade perennial Y1	1.00	2.40	2.60	2.50
<i>Delosperma</i> Kaleidoscope™ 'Razzle Dazzle'	sun perennial Y2	2.00	2.89	2.28	2.45
<i>Lavandula</i> 'Anouk Twilight'	sun perennial Y3	3.00	2.17	2.61	2.44
<i>Dahlia</i> 'Dalaya® Purple Lace'	sun annual	2.19	2.78	2.28	2.40
<i>Lobelia</i> 'Laguna® Royale Lilac'	sun annual	2.61	2.25	2.31	2.39
<i>Echinacea</i> 'Sombrero® Rosada'	sun perennial Y3	3.00	2.53	1.97	2.38
<i>Sedum</i> 'Wineberry Delight'	sun perennial Y1	3.50	2.28	1.94	2.31
<i>Phlox</i> 'Southern Blaze® Blueberry'	sun annual	2.28	2.28	2.33	2.30
<i>Lavandula</i> 'Anouk Purple Medley'	sun perennial Y3	2.50	2.14	2.22	2.26
<i>Perovskia</i> 'CrazyBlue'	sun perennial Y3	3.00	1.97	2.50	2.26
<i>Salvia</i> 'Blue by You'	sun perennial Y3	1.50	2.86	1.89	2.18

RESULTS AND DISCUSSION

Table 4. Average criteria scoring for all 2025 trial entries (continued).

Cultivar	Type	Flower	Leaf	Impact	Overall Average
<i>Petunia</i> 'Easy Wave® Pink Pearl'	sun annual	2.22	2.14	2.06	2.14
<i>Petunia</i> 'EZ Rider® Blue'	sun annual	2.11	2.00	2.11	2.07
<i>Dicentra</i> 'White Diamonds'	sun perennial Y1	2.60	2.13	1.89	2.03
<i>Echinacea</i> 'Sombrero® Salsa Red'	sun perennial Y3	2.00	2.03	1.69	1.94
<i>Echinacea</i> Artisan™ 'Soft Orange'	sun perennial Y2	1.88	1.94	1.78	1.85
<i>Didelta</i> 'Silver River®'	sun perennial Y1	1.00	1.80	1.75	1.78
<i>Brunnera</i> 'Frostline'	shade perennial Y1	1.00	1.72	1.75	1.73
<i>Echinacea</i> 'Double Scoop™ Strawberry Deluxe'	sun perennial Y3	2.25	1.83	1.50	1.69
<i>Stachys</i> 'Little Lamb'	sun perennial Y3	N/A	1.81	1.56	1.68
<i>Brunnera</i> 'Permafrost'	shade perennial Y1	1.00	1.66	1.56	1.58
<i>Penstemon</i> 'Rock Candy® Pink Ipd.'	sun perennial Y1	1.57	1.53	1.50	1.51
<i>Dianthus</i> Jolt™ 'Pink Magic'	sun perennial Y2	3.00	1.50	1.13	1.44
<i>Echinacea</i> 'Artisan™ Yellow Ombre'	sun perennial Y2	N/A	1.31	1.19	1.25
<i>Salvia</i> 'Unplugged® So Blue™'	sun perennial Y2	1.33	1.16	1.00	1.11
<i>Buddleia</i> 'Cherry Royale'	sun perennial Y2	1.00	1.10	1.10	1.10
<i>Salvia</i> 'Silver Scent'	edible Y3	1.00	1.20	1.10	1.10
<i>Buddleia</i> Chrysalis™ 'Steel Blue'	sun perennial Y2	N/A	1.13	1.00	1.06
<i>Heliopsis</i> 'Touch of Blush'	sun perennial Y2	N/A	1.06	1.00	1.03
<i>Lavandula</i> 'Annet'	sun perennial Y2	N/A	1.00	1.00	1.00
<i>Lavandula</i> 'SuperBlue'	sun perennial Y2	N/A	1.00	1.00	1.00
<i>Nepeta</i> 'Junior Walker™'	sun perennial Y2	N/A	1.00	1.00	1.00
<i>Penstemon</i> Bejeweled® 'Rose Rhinestones'	sun perennial Y2	N/A	1.00	1.00	1.00
<i>Tecoma</i> 'Kalama™ Blood Orange'	sun perennial Y2	N/A	1.00	1.00	1.00

REFERENCES

Hamrick, D., 2003. Ball Redbook, crop production, Volume: 2. Batavia: Ball Publishing.



MS AGRICULTURAL AND
FORESTRY EXPERIMENT STATION

The mission of the Mississippi Agricultural And Forestry Experiment Station and the College Of Agriculture And Life Sciences is to advance agriculture and natural resources through teaching and learning, research and discovery, service and engagement which will enhance economic prosperity and environmental stewardship, to build stronger communities and improve the health and well-being of families, and to serve people of the state, the region, and the world.

Scott Willard, Director

mafes.msstate.edu

Mention of a trademark or proprietary product does not constitute a guarantee or warranty of the product by the Mississippi Agricultural and Forestry Experiment Station and does not imply its approval to the exclusion of other products that also may be suitable.

Mississippi State University is an equal opportunity institution. Discrimination is prohibited in university employment, programs or activities based on race, color, ethnicity, sex, pregnancy, religion, national origin, disability, age, sexual orientation, genetic information, status as a U.S. veteran, or any other status to the extent protected by applicable law. Questions about equal opportunity programs or compliance should be directed to the Office of Civil Rights Compliance, 231 Famous Maroon Band Street, P.O. 6044, Mississippi State, MS 39762, (662) 325-5839.